

# HTF9C antibody



Catalog Number: 111707

## Product name

HTF9C antibody

## Specificity

Human, Mouse, Rat; other species not tested.

## Antibody description

HTF9C Rabbit Polyclonal antibody. Positive WB detected in mouse liver tissue, HepG2 cells. Positive IHC detected in human kidney tissue, human breast cancer tissue. Observed molecular weight by Western-blot: 42-44kd

## Preparation

This antibody was obtained by immunization of HTF9C recombinant protein (Accession Number: NM\_182984). Purification method: Antigen affinity purified.

## Formulation

PBS with 0.02% sodium azide and 50% glycerol pH 7.3.

## Storage

Store at -20°C. DO NOT ALIQUOT

## Clonality

Polyclonal

## Ig Type

Rabbit IgG

## Applications

ELISA, WB, IHC

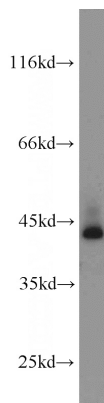
## Dilutions

Recommended Dilution:

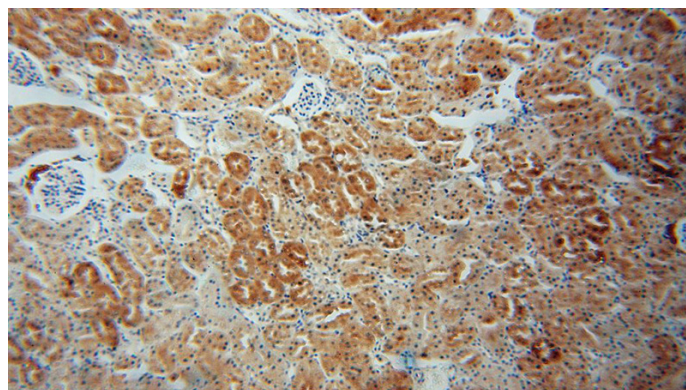
WB: 1:200-1:2000

IHC: 1:20-1:200

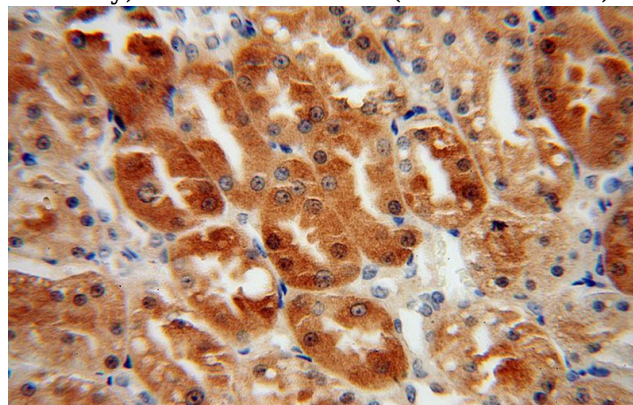
## Validations



mouse liver tissue were subjected to SDS PAGE followed by western blot with Catalog No:111707(TRMT2A antibody) at dilution of 1:1000



Immunohistochemical of paraffin-embedded human kidney using Catalog No:111707(TRMT2A antibody) at dilution of 1:50 (under 10x lens)



Immunohistochemical of paraffin-embedded human kidney using Catalog No:111707(TRMT2A antibody) at dilution of 1:50 (under 40x lens)