

# HSPH1 antibody



Catalog Number: 111705

## Product name

HSPH1 antibody

Recommended Dilution:

WB: 1:500-1:5000

## Specificity

Human; other species not tested.

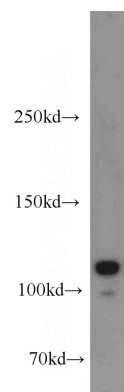
IHC: 1:20-1:200

IF: 1:20-1:200

## Antibody description

HSPH1 Rabbit Polyclonal antibody. Positive WB detected in MCF7 cells, HeLa cells, human brain tissue, Jurkat cells, K-562 cells. Positive IHC detected in human testis tissue, human colon cancer tissue, human liver cancer tissue, human pancreas cancer tissue. Positive IF detected in HeLa cells. Observed molecular weight by Western-blot: 105 kDa

## Validations



## Preparation

This antibody was obtained by immunization of HSPH1 recombinant protein (Accession Number: NM\_006644). Purification method: Antigen affinity purified.

MCF7 cells were subjected to SDS PAGE followed by western blot with Catalog No:111705(HSPH1 antibody) at dilution of 1:1000

## Formulation

PBS with 0.02% sodium azide and 50% glycerol pH 7.3.

## Storage

Store at -20°C. DO NOT ALIQUOT

## Clonality

Polyclonal

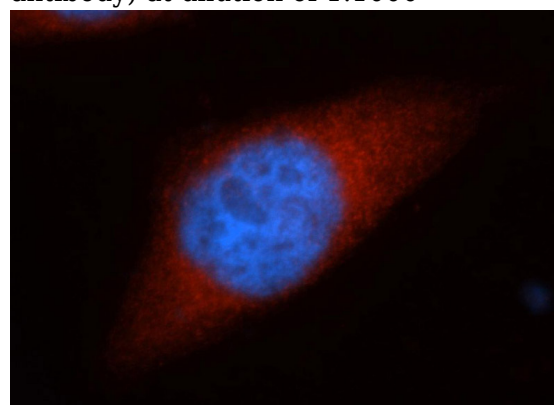
## Ig Type

Rabbit IgG

## Applications

ELISA, WB, IF, IHC

## Dilutions

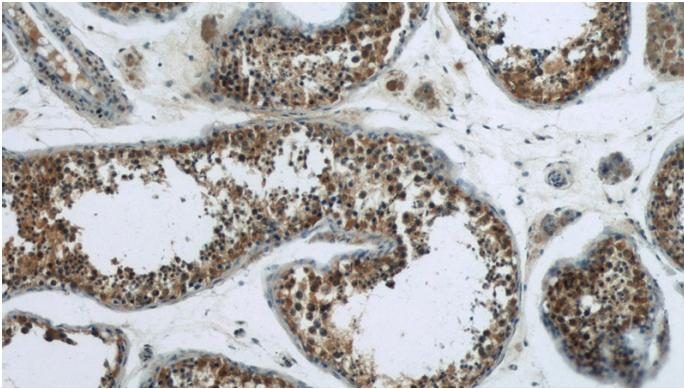


Immunofluorescent analysis of HeLa cells, using HSPH1 antibody Catalog No:111705 at 1:50 dilution and Rhodamine-labeled goat anti-rabbit IgG (red). Blue pseudocolor = DAPI (fluorescent DNA dye).

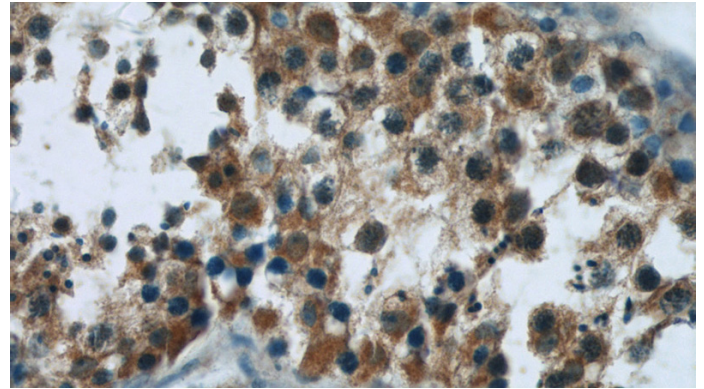
# HSPH1 antibody

Catalog Number: 111705

---



Immunohistochemistry of paraffin-embedded human testis tissue slide using Catalog No:111705(HSPH1 Antibody) at dilution of 1:50 (under 10x lens)



Immunohistochemistry of paraffin-embedded human testis tissue slide using Catalog No:111705(HSPH1 Antibody) at dilution of 1:50 (under 40x lens)