

# IGFBP7 antibody

Catalog Number: 111689

## Product name

IGFBP7 antibody

IP: 1:200-1:1000

IHC: 1:20-1:200

## Specificity

Human, Mouse; other species not tested.

## Antibody description

IGFBP7 Rabbit Polyclonal antibody. Positive IHC detected in human liver cancer tissue, human liver tissue. Positive WB detected in mouse colon tissue, Transfected HEK-293 cells. Positive IP detected in mouse appendix tissue. Observed molecular weight by Western-blot: ~30 kDa

## Preparation

This antibody was obtained by immunization of Peptide (Accession Number: NM\_001553).

Purification method: Antigen affinity purified.

## Formulation

PBS with 0.1% sodium azide and 50% glycerol pH 7.3.

## Storage

Store at -20°C. DO NOT ALIQUOT

## Clonality

Polyclonal

## Ig Type

Rabbit IgG

## Applications

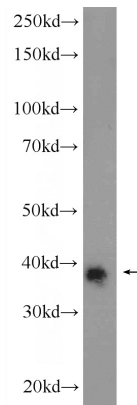
ELISA, WB, IHC, IP

## Dilutions

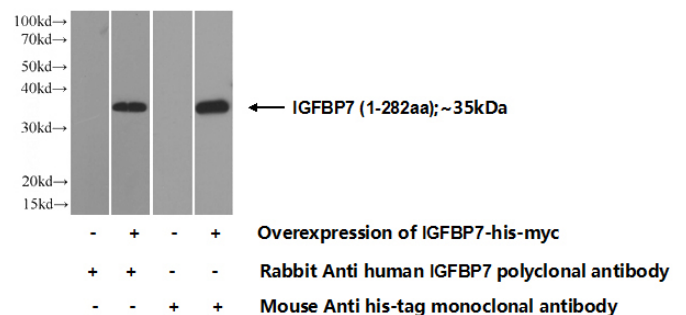
Recommended Dilution:

WB: 1:200-1:1000

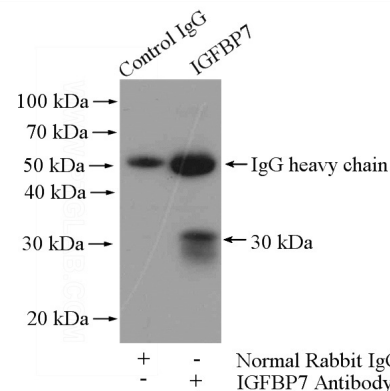
## Validations



mouse colon tissue were subjected to SDS PAGE followed by western blot with Catalog No:111689(IGFBP7 Antibody) at dilution of 1:300



Transfected HEK-293 cells were subjected to SDS PAGE followed by western blot with Catalog No:111689(IGFBP7 Antibody) at dilution of 1:700

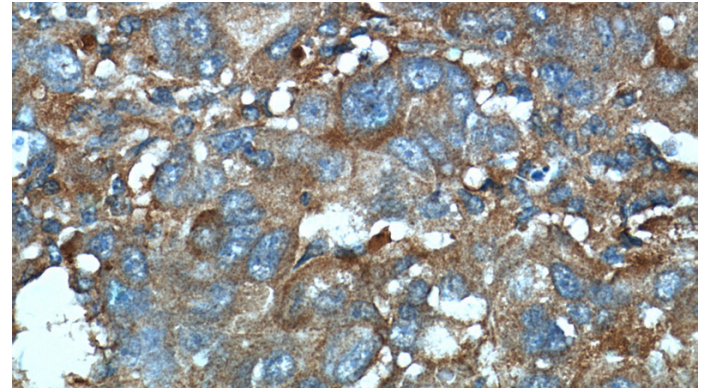
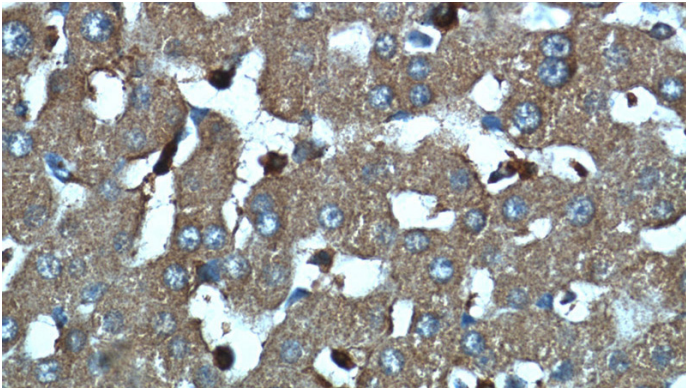


IP Result of anti-IGFBP7 (IP:Catalog No:111689, 4ug; Detection:Catalog No:111689 1:300) with mouse appendix tissue lysate 6000ug.

# IGFBP7 antibody

Catalog Number: 111689

---



Immunohistochemistry of paraffin-embedded human liver tissue slide using Catalog No:111689(IGFBP7 Antibody) at dilution of 1:50 (under 40x lens)

Immunohistochemistry of paraffin-embedded human liver cancer tissue slide using Catalog No:111689(IGFBP7 Antibody) at dilution of 1:50 (under 40x lens)