

# IGFBP3 antibody

Catalog Number: 111686

## Product name

IGFBP3 antibody

IHC: 1:20-1:200

IF: 1:10-1:100

## Specificity

Human, Mouse; other species not tested.

## Antibody description

IGFBP3 Rabbit Polyclonal antibody. Positive WB detected in A2780 cells, HeLa cells. Positive IF detected in HeLa cells. Positive IHC detected in human breast cancer tissue, human colon cancer tissue. Observed molecular weight by Western-blot: 37-45 kDa

## Preparation

This antibody was obtained by immunization of IGFBP3 recombinant protein (Accession Number: XM\_017012152). Purification method: Antigen affinity purified.

## Formulation

PBS with 0.1% sodium azide and 50% glycerol pH 7.3.

## Storage

Store at -20°C. DO NOT ALIQUOT

## Clonality

Polyclonal

## Ig Type

Rabbit IgG

## Applications

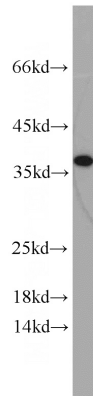
ELISA, WB, IHC, IF

## Dilutions

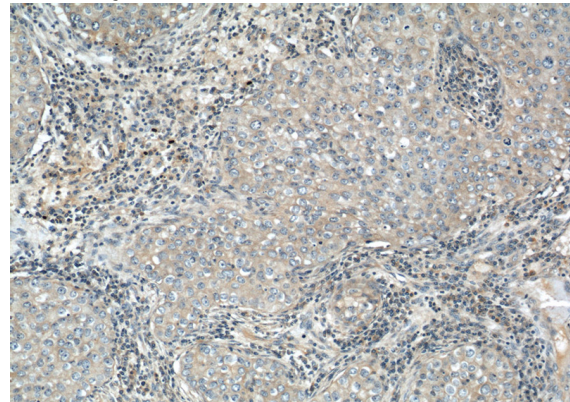
Recommended Dilution:

WB: 1:200-1:1000

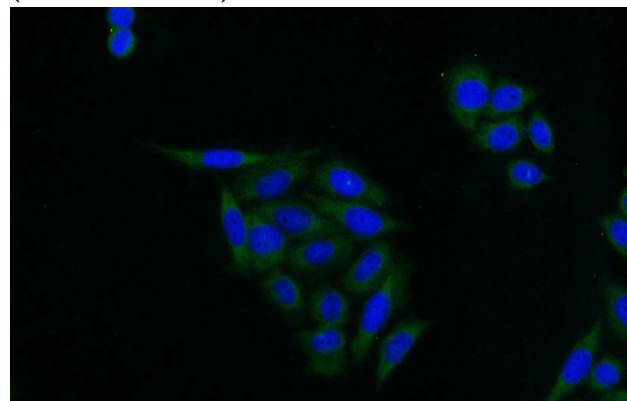
## Validations



A2780 cells were subjected to SDS PAGE followed by western blot with Catalog No:111686(IGFBP3 antibody) at dilution of 1:100



Immunohistochemical of paraffin-embedded human breast cancer using Catalog No:111686(IGFBP3 antibody) at dilution of 1:50 (under 10x lens)



Immunofluorescent analysis of HeLa cells using

# IGFBP3 antibody



Catalog Number: 111686

---

Catalog No:111686(IGFBP3 Antibody) at dilution of 1:25 and Alexa Fluor 488-conjugated AffiniPure Goat Anti-Rabbit IgG(H+L)