

IGFBP2 antibody

Catalog Number: 111685

Product name

IGFBP2 antibody

IP: 1:200-1:1000

IHC: 1:20-1:200

Specificity

Human, Mouse; other species not tested.

Antibody description

IGFBP2 Rabbit Polyclonal antibody. Positive WB detected in MCF7 cells. Positive IP detected in SH-SY5Y cells. Positive IHC detected in human prostate cancer tissue. Observed molecular weight by Western-blot: 36kd

Preparation

This antibody was obtained by immunization of IGFBP2 recombinant protein (Accession Number: NM_000597). Purification method: Antigen affinity purified.

Formulation

PBS with 0.1% sodium azide and 50% glycerol pH 7.3.

Storage

Store at -20°C. DO NOT ALIQUOT

Clonality

Polyclonal

Ig Type

Rabbit IgG

Applications

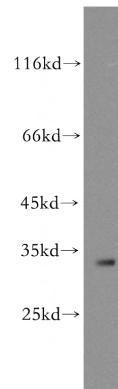
ELISA, WB, IHC, IP

Dilutions

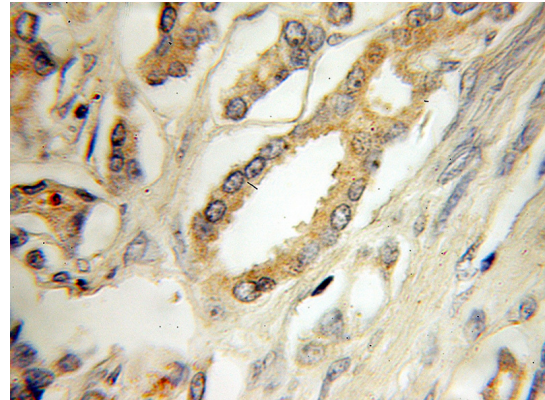
Recommended Dilution:

WB: 1:200-1:2000

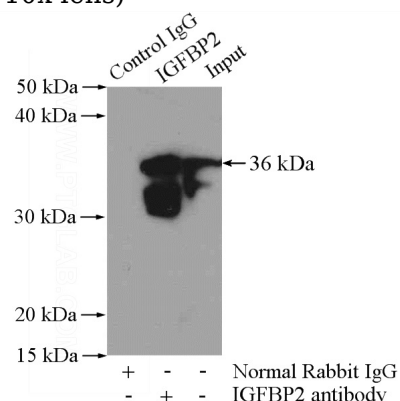
Validations



MCF7 cells were subjected to SDS PAGE followed by western blot with Catalog No:111685(IGFBP2 antibody) at dilution of 1:300



Immunohistochemical of paraffin-embedded human prostate cancer using Catalog No:111685(IGFBP2 antibody) at dilution of 1:50 (under 10x lens)



IP Result of anti-IGFBP2 (IP:Catalog No:111685,

IGFBP2 antibody



Catalog Number: 111685

4ug; Detection:Catalog No:111685 1:300) with SH-SY5Y cells lysate 1200ug.