

IGFBP2 antibody



Catalog Number: 111684

Product name

IGFBP2 antibody

IHC: 1:20-1:200

IF: 1:10-1:100

Specificity

Human; other species not tested.

Antibody description

IGFBP2 Rabbit Polyclonal antibody. Positive WB detected in HeLa cells, PC-3 cells. Positive IF detected in HeLa cells. Positive IHC detected in human breast cancer tissue, human gliomas tissue, human prostate cancer tissue. Observed molecular weight by Western-blot: 32kd

Preparation

This antibody was obtained by immunization of IGFBP2 recombinant protein (Accession Number: NM_000597). Purification method: Antigen affinity purified.

Formulation

PBS with 0.02% sodium azide and 50% glycerol pH 7.3.

Storage

Store at -20°C. DO NOT ALIQUOT

Clonality

Polyclonal

Ig Type

Rabbit IgG

Applications

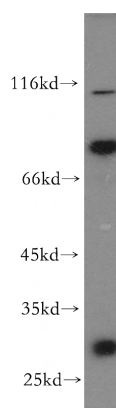
ELISA, WB, IHC, IF

Dilutions

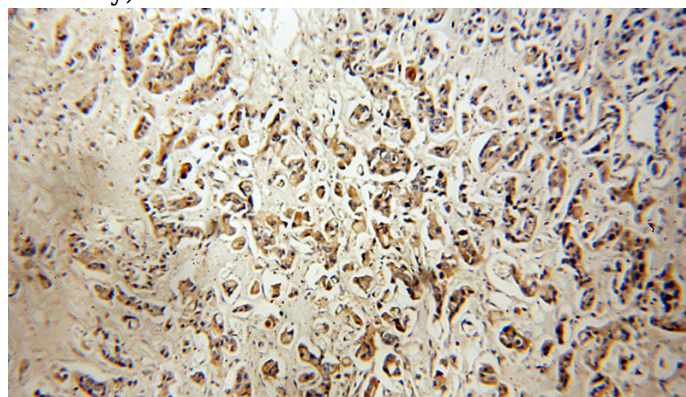
Recommended Dilution:

WB: 1:200-1:2000

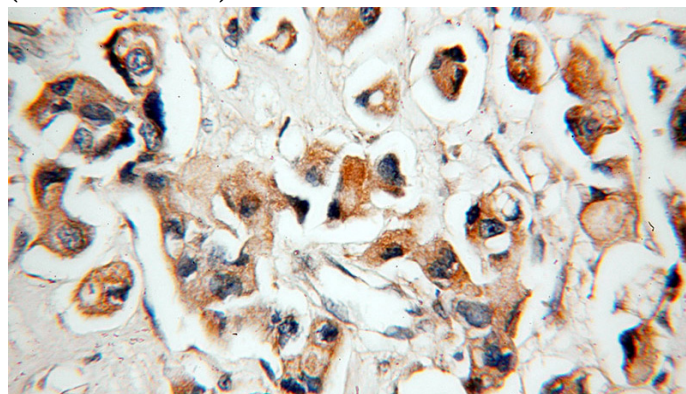
Validations



HeLa cells were subjected to SDS PAGE followed by western blot with Catalog No:111684(IGFBP2 antibody) at dilution of 1:300



Immunohistochemical of paraffin-embedded human breast cancer using Catalog No:111684(IGFBP2 antibody) at dilution of 1:50 (under 10x lens)



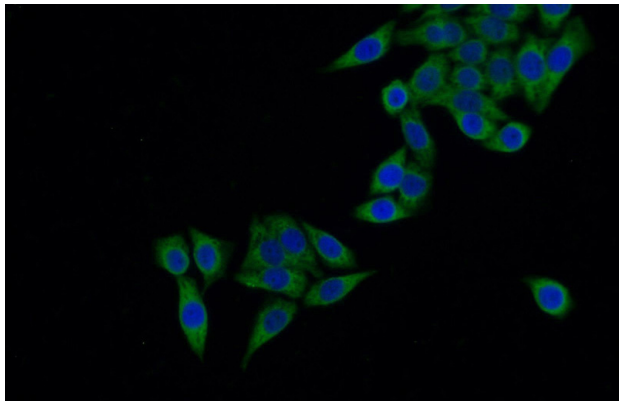
Immunohistochemical of paraffin-embedded

IGFBP2 antibody



Catalog Number: 111684

human breast cancer using Catalog
No:111684(IGFBP2 antibody) at dilution of 1:50
(under 40x lens)



Immunofluorescent analysis of HeLa cells using
Catalog No:111684(IGFBP2 Antibody) at dilution
of 1:25 and Alexa Fluor 488-conjugated AffiniPure
Goat Anti-Rabbit IgG(H+L)