

IGF2BP1 antibody

Catalog Number: 111679

Product name

IGF2BP1 antibody

Recommended Dilution:

WB: 1:500-1:5000

Specificity

Human, Mouse, Rat; other species not tested.

IP: 1:500-1:5000

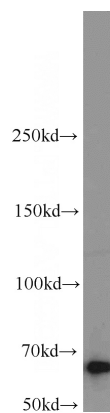
IHC: 1:20-1:200

Antibody description

IGF2BP1 Rabbit Polyclonal antibody. Positive IHC detected in human testis tissue, human kidney tissue. Positive IF detected in A375 cells. Positive IP detected in HEK-293 cells. Positive WB detected in Jurkat cells, A375 cells, HEK-293 cells, HepG2 cells, HuH-7 cells, mouse kidney tissue, rat kidney tissue. Observed molecular weight by Western-blot: 60-70 kDa

IF: 1:20-1:200

Validations



Preparation

This antibody was obtained by immunization of IGF2BP1 recombinant protein (Accession Number: NM_006546). Purification method: Antigen affinity purified.

Jurkat cells were subjected to SDS PAGE followed by western blot with Catalog No:111679(IGF2BP1 antibody) at dilution of 1:1000

Formulation

PBS with 0.02% sodium azide and 50% glycerol pH 7.3.

Storage

Store at -20°C. DO NOT ALIQUOT

Clonality

Polyclonal

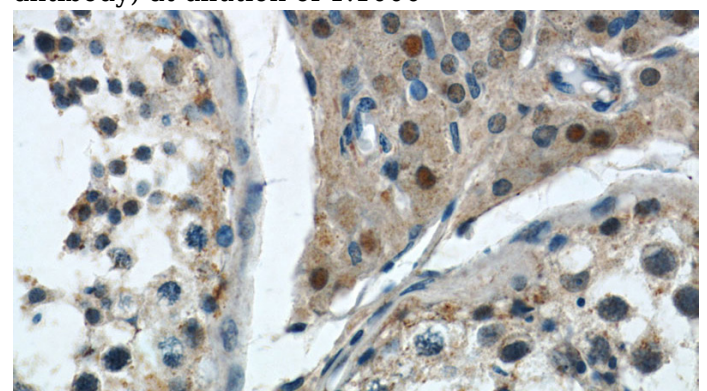
Ig Type

Rabbit IgG

Applications

ELISA, WB, IHC, IF, IP

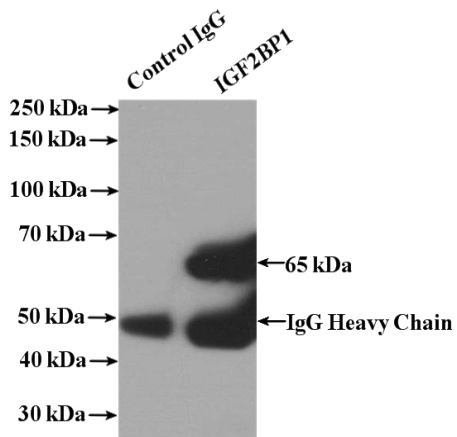
Dilutions



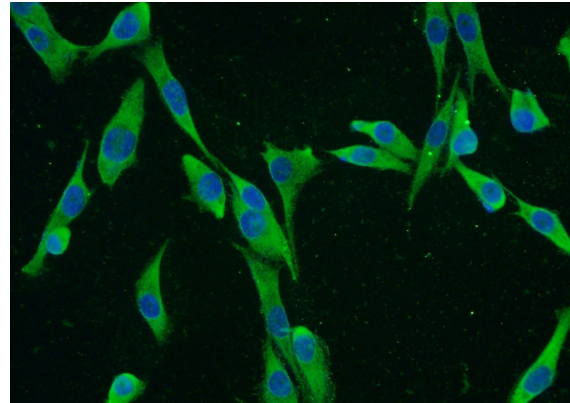
Immunohistochemistry of paraffin-embedded human testis slide using Catalog No:111679(IGF2BP1 Antibody) at dilution of 1:50

IGF2BP1 antibody

Catalog Number: 111679



IP Result of anti-IGF2BP1 (IP:Catalog No:111679, 4ug; Detection:Catalog No:111679 1:1000) with HEK-293 cells lysate 1480ug.



Immunofluorescent analysis of A375 cells using Catalog No:111679(IGF2BP1 Antibody) at dilution of 1:50 and Alexa Fluor 488-conjugated AffiniPure Goat Anti-Rabbit IgG(H+L)