

# IL15RA antibody

Catalog Number: 111662

## Product name

IL15RA antibody

WB: 1:200-1:2000

IHC: 1:20-1:200

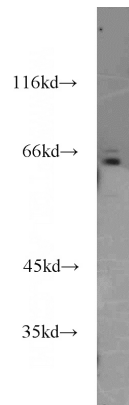
## Specificity

Human; other species not tested.

## Validations

## Antibody description

IL15RA Rabbit Polyclonal antibody. Positive IHC detected in human liver tissue, human brain tissue, human heart tissue, human kidney tissue, human skin tissue, human spleen tissue, human testis tissue. Positive WB detected in HeLa cells. Observed molecular weight by Western-blot: 55-65 kDa



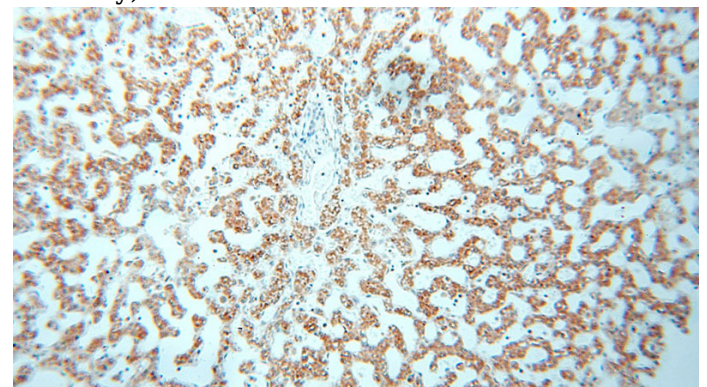
## Preparation

This antibody was obtained by immunization of IL15RA recombinant protein (Accession Number: NM\_001243539). Purification method: Antigen affinity purified.

HeLa cells were subjected to SDS PAGE followed by western blot with Catalog No:111662(IL15RA antibody) at dilution of 1:500

## Formulation

PBS with 0.02% sodium azide and 50% glycerol pH 7.3.



## Storage

Store at -20°C. DO NOT ALIQUOT

## Clonality

Polyclonal

## Ig Type

Rabbit IgG

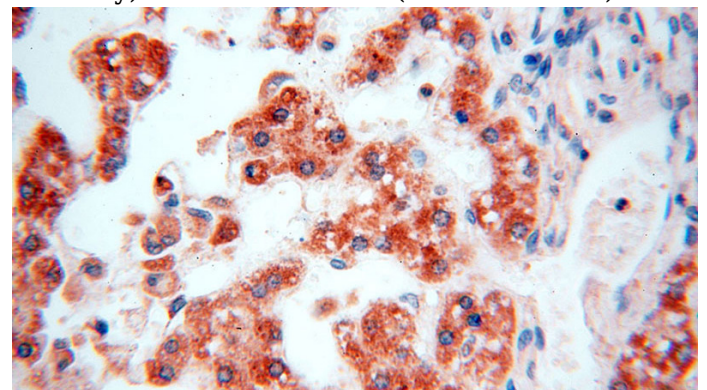
## Applications

ELISA, WB, IHC

## Dilutions

Recommended Dilution:

Immunohistochemical of paraffin-embedded human liver using Catalog No:111662(IL15RA antibody) at dilution of 1:50 (under 10x lens)



Immunohistochemical of paraffin-embedded human liver using Catalog No:111662(IL15RA

# IL15RA antibody



Catalog Number: 111662

---

antibody) at dilution of 1:50 (under 40x lens)