

IKBKG antibody

Catalog Number: 111645

Product name

IKBKG antibody

IHC: 1:20-1:200

IF: 1:20-1:200

Specificity

Human, Mouse, Rat; other species not tested.

Antibody description

IKBKG Rabbit Polyclonal antibody. Positive IF detected in HeLa cells. Positive IHC detected in human kidney tissue. Positive WB detected in K-562 cells, HEK-293 cells, mouse brain tissue. Observed molecular weight by Western-blot: 48 kDa

Preparation

This antibody was obtained by immunization of IKBKG recombinant protein (Accession Number: NM_001321396). Purification method: Antigen affinity purified.

Formulation

PBS with 0.02% sodium azide and 50% glycerol pH 7.3.

Storage

Store at -20°C. DO NOT ALIQUOT

Clonality

Polyclonal

Ig Type

Rabbit IgG

Applications

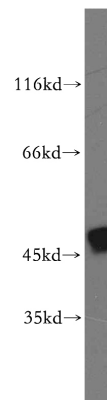
ELISA, WB, IHC, IF

Dilutions

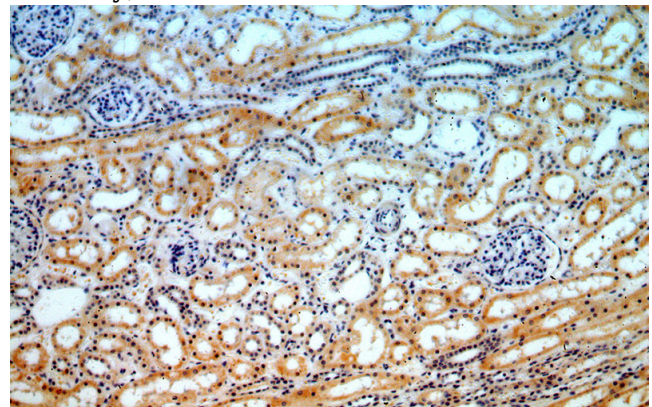
Recommended Dilution:

WB: 1:200-1:2000

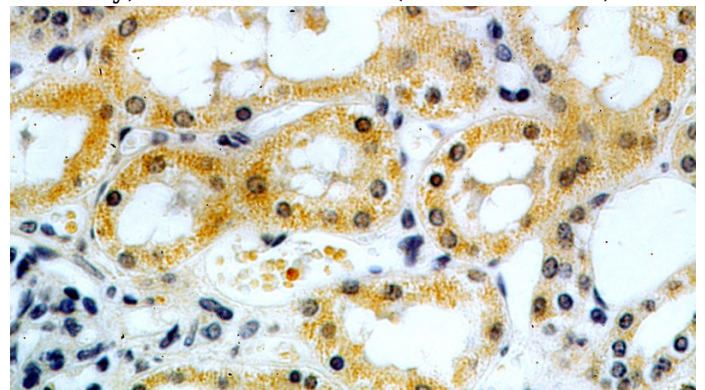
Validations



K-562 cells were subjected to SDS PAGE followed by western blot with Catalog No:111645(IKBKG antibody) at dilution of 1:800



Immunohistochemical of paraffin-embedded human kidney using Catalog No:111645(IKBKG antibody) at dilution of 1:50 (under 10x lens)

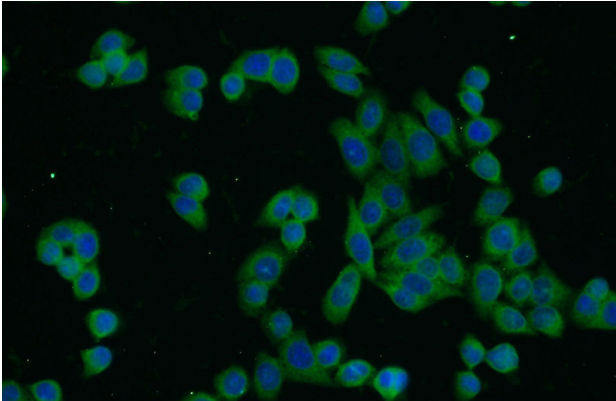


Immunohistochemical of paraffin-embedded human kidney using Catalog No:111645(IKBKG

IKBKG antibody

Catalog Number: 111645

antibody) at dilution of 1:50 (under 40x lens)



Immunofluorescent analysis of HeLa cells using Catalog No:111645(IKBKG Antibody) at dilution of 1:50 and Alexa Fluor 488-conjugated AffiniPure Goat Anti-Rabbit IgG(H+L)