

# IFITM3 antibody

Catalog Number: 111624

## Product name

IFITM3 antibody

IP: 1:500-1:5000

IHC: 1:20-1:200

## Specificity

Human, Mouse, Rat; other species not tested.

## Antibody description

IFITM3 Rabbit Polyclonal antibody. Positive IHC detected in human lung cancer tissue, human colon cancer tissue. Positive WB detected in mouse colon tissue, HeLa cells. Positive IP detected in HeLa cells. Observed molecular weight by Western-blot: 14 kDa

## Preparation

This antibody was obtained by immunization of IFITM3 recombinant protein (Accession Number: NM\_021034). Purification method: Antigen affinity purified.

## Formulation

PBS with 0.1% sodium azide and 50% glycerol pH 7.3.

## Storage

Store at -20°C. DO NOT ALIQUOT

## Clonality

Polyclonal

## Ig Type

Rabbit IgG

## Applications

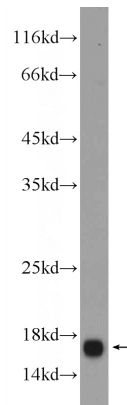
ELISA, IHC, IP, WB

## Dilutions

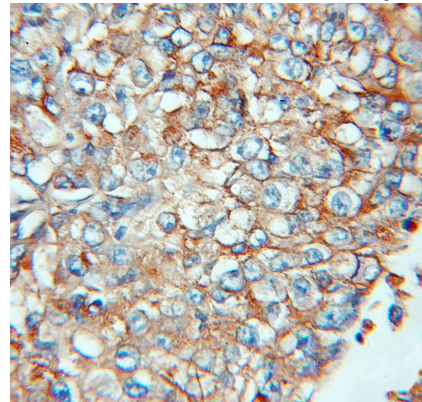
Recommended Dilution:

WB: 1:500-1:5000

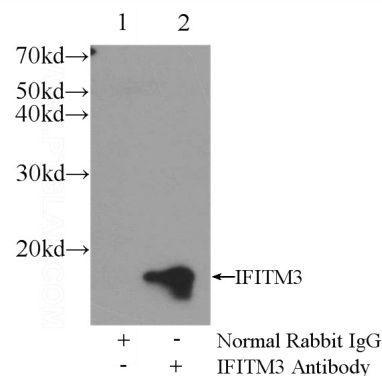
## Validations



mouse colon tissue were subjected to SDS PAGE followed by western blot with Catalog No:111624(IFITM3 Antibody) at dilution of 1:1000



Immunohistochemical of paraffin-embedded human lung cancer using Catalog No:111624(IFITM3 antibody) at dilution of 1:100 (under 10x lens)



IP Result of anti-IFITM3 (IP:Catalog No:111624,

# IFITM3 antibody



Catalog Number: 111624

---

3ug; Detection:Catalog No:111624 1:1500) with HeLa cells lysate 2400ug.