

IFIT3 antibody



Catalog Number: 111620

Product name

IFIT3 antibody

WB: 1:200-1:2000

IP: 1:200-1:2000

Immunogen

IF: 1:50-1:500

Specificity

Human; other species not tested.

Antibody description

IFIT3 Rabbit Polyclonal antibody. Positive IF detected in HepG2 cells. Positive WB detected in HepG2 cells. Positive IP detected in HepG2 cells. Observed molecular weight by Western-blot: 60 kDa

Preparation

This antibody was obtained by immunization of IFIT3 recombinant protein (Accession Number: NM_001031683). Purification method: Antigen affinity purified.

Formulation

PBS with 0.02% sodium azide and 50% glycerol pH 7.3.

Storage

Store at -20°C. DO NOT ALIQUOT

Clonality

Polyclonal

Ig Type

Rabbit IgG

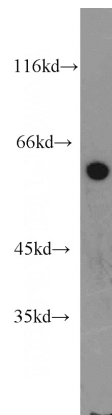
Applications

ELISA, WB, IP, IF

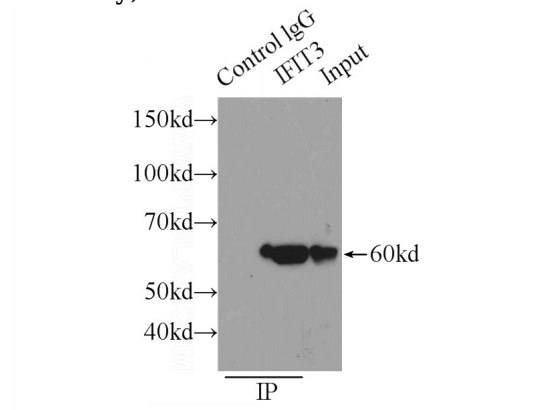
Dilutions

Recommended Dilution:

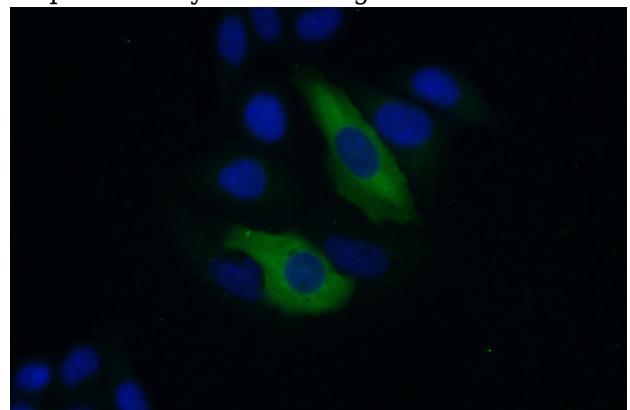
Validations



HepG2 cells were subjected to SDS PAGE followed by western blot with Catalog No:111620(IFIT3 antibody) at dilution of 1:800



IP Result of anti-IFIT3 (IP:Catalog No:111620, 3ug; Detection:Catalog No:111620 1:500) with HepG2 cells lysate 1720ug.



IFIT3 antibody



Catalog Number: 111620

Immunofluorescent analysis of (10% Formaldehyde) fixed HepG2 cells using Catalog No:111620(IFIT3 Antibody) at dilution of 1:50 and

Alexa Fluor 488-conjugated AffiniPure Goat Anti-Rabbit IgG(H+L)