

IFIT2 antibody



Catalog Number: 111619

Product name

IFIT2 antibody

WB: 1:200-1:1000

IP: 1:200-1:1000

Specificity

Human, Mouse; other species not tested.

IHC: 1:20-1:200

IF: 1:10-1:100

Antibody description

IFIT2 Rabbit Polyclonal antibody. Positive IHC detected in human skin cancer tissue, human kidney tissue. Positive IF detected in HepG2 cells. Positive IP detected in mouse skin tissue. Positive WB detected in A431 cells, RAW 264.7 cells. Observed molecular weight by Western-blot: 50-55 kDa

Preparation

This antibody was obtained by immunization of IFIT2 recombinant protein (Accession Number: BC032839). Purification method: Antigen affinity purified.

Formulation

PBS with 0.1% sodium azide and 50% glycerol pH 7.3.

Storage

Store at -20°C. DO NOT ALIQUOT

Clonality

Polyclonal

Ig Type

Rabbit IgG

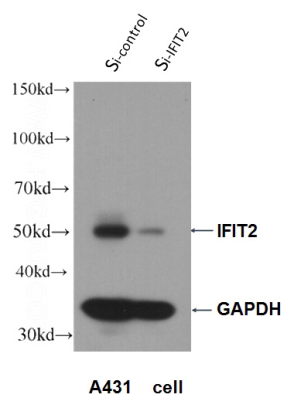
Applications

ELISA, WB, IHC, IF, IP

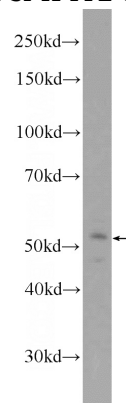
Dilutions

Recommended Dilution:

Validations

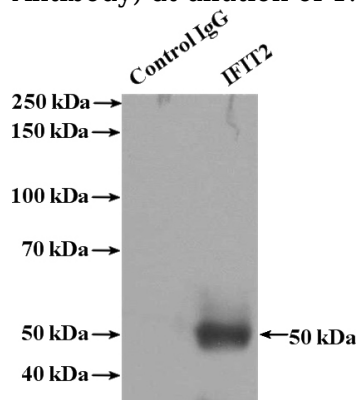


WB result of IFIT2 antibody (Catalog No:111619, 1:300) with si-IFIT2 and si-Control transfected



A431 cells.

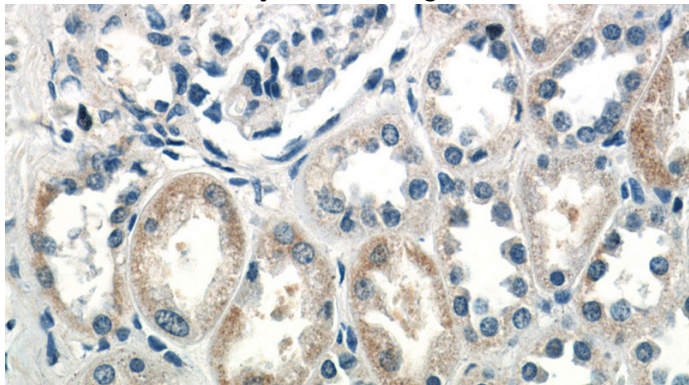
A431 cells were subjected to SDS PAGE followed by western blot with Catalog No:111619(IFIT2 Antibody) at dilution of 1:300



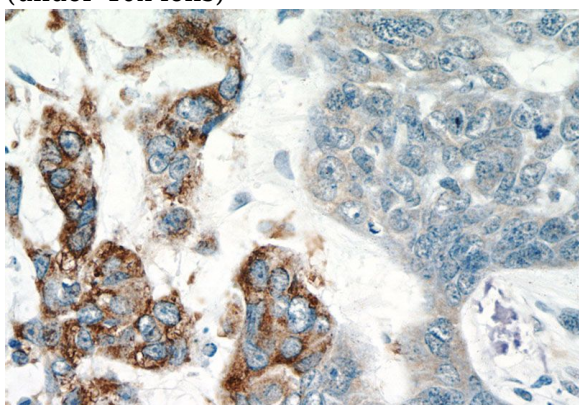
IFIT2 antibody

Catalog Number: 111619

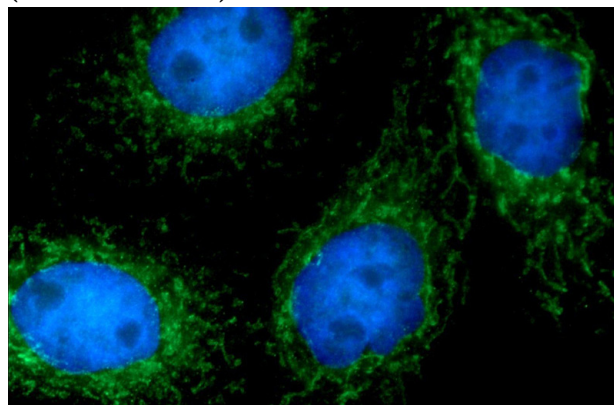
IP Result of anti-IFIT2 (IP:Catalog No:111619, 4ug; Detection:Catalog No:111619 1:300) with mouse skin tissue lysate 3200ug.



Immunohistochemistry of paraffin-embedded human kidney tissue slide using Catalog No:111619(IFIT2 Antibody) at dilution of 1:50 (under 40x lens)



Immunohistochemistry of paraffin-embedded human skin cancer tissue slide using Catalog No:111619(IFIT2 Antibody) at dilution of 1:50 (under 40x lens)



Immunofluorescent analysis of HepG2 cells using Catalog No:111619(IFIT2 Antibody) at dilution of 1:25 and Alexa Fluor 488-conjugated AffiniPure Goat Anti-Rabbit IgG(H+L)