

IFIT1L antibody



Catalog Number: 111618

Product name

IFIT1L antibody

IHC: 1:20-1:200

IF: 1:10-1:100

Specificity

Human, Rat, Mouse; other species not tested.

Antibody description

IFIT1L Rabbit Polyclonal antibody. Positive IHC detected in human kidney tissue, human testis tissue. Positive IF detected in HEK-293 cells, RAW 264.7 cells. Positive WB detected in RAW 264.7 cells. Observed molecular weight by Western-blot: 55-65 kDa

Preparation

This antibody was obtained by immunization of IFIT1L recombinant protein (Accession Number: NM_001010987). Purification method: Antigen affinity purified.

Formulation

PBS with 0.1% sodium azide and 50% glycerol pH 7.3.

Storage

Store at -20°C. DO NOT ALIQUOT

Clonality

Polyclonal

Ig Type

Rabbit IgG

Applications

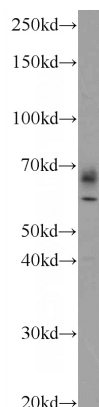
ELISA, WB, IHC, IF

Dilutions

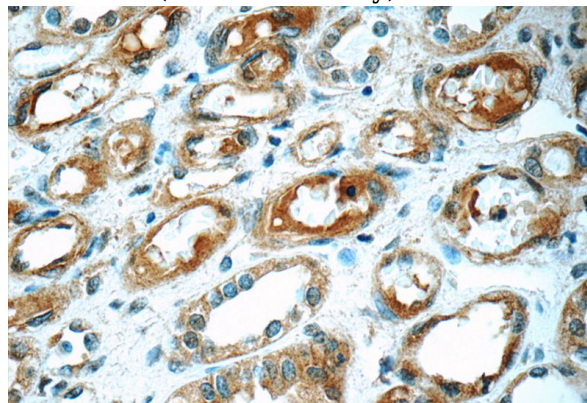
Recommended Dilution:

WB: 1:200-1:1000

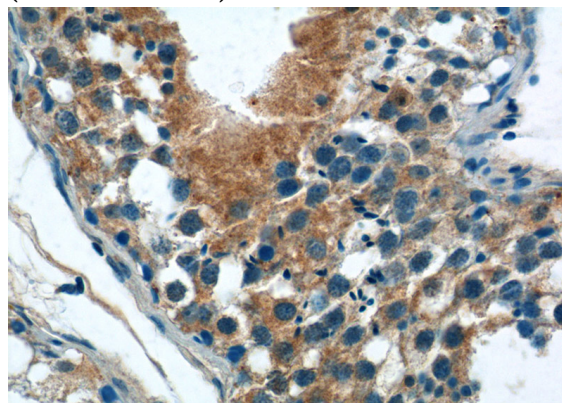
Validations



RAW 264.7 cells were subjected to SDS PAGE followed by western blot with Catalog No:111618(IFIT1L Antibody) at dilution of 1:300



Immunohistochemistry of paraffin-embedded human kidney tissue slide using Catalog No:111618(IFIT1L Antibody) at dilution of 1:50 (under 40x lens)



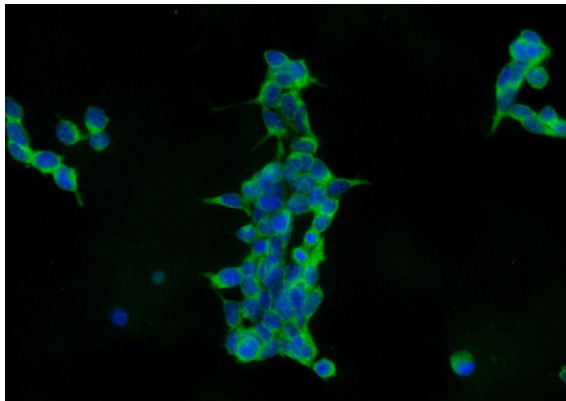
Immunohistochemistry of paraffin-embedded

IFIT1L antibody



Catalog Number: 111618

human testis tissue slide using Catalog No:111618(IFIT1L Antibody) at dilution of 1:50 (under 40x lens)



Immunofluorescent analysis of HEK-293 cells using Catalog No:111618(IFIT1L Antibody) at dilution of 1:25 and Alexa Fluor 488-conjugated AffiniPure Goat Anti-Rabbit IgG(H+L)