

# IFIT1 antibody

Catalog Number: 111617

## Product name

IFIT1 antibody

## Immunogen

[Human IFIT1 Recombinant protein \(His tag\)](#)

## Specificity

Human; other species not tested.

## Antibody description

IFIT1 Rabbit Polyclonal antibody. Positive IHC detected in human breast cancer, human liver cancer. Positive WB detected in U-937 cells, HeLa cells, LPS treated RAW 264.7 cells. Observed molecular weight by Western-blot: 55 Kda

## Preparation

This antibody was obtained by immunization of IFIT1 recombinant protein (Accession Number: NM\_001548). Purification method: Antigen Affinity purified.

## Formulation

PBS with 0.02% sodium azide and 50% glycerol pH 7.3.

## Storage

Store at -20°C. DO NOT ALIQUOT

## Clonality

Polyclonal

## Ig Type

Rabbit IgG

## Applications

ELISA, IHC, WB

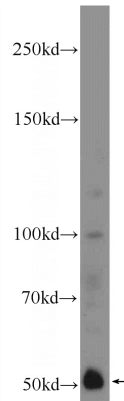
## Dilutions

Recommended Dilution:

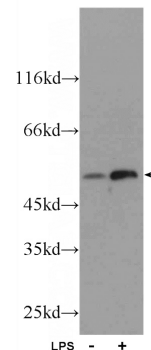
WB: 1:200-1:2000

IHC: 1:20-1:200

## Validations

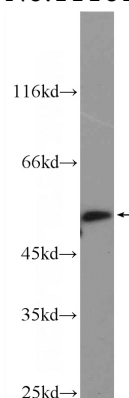


HeLa cells were subjected to SDS PAGE followed by western blot with Catalog No:111617(IFIT1



Antibody) at dilution of 1:600

LPS treated RAW 264.7 cells were subjected to SDS PAGE followed by western blot with Catalog No:111617(IFIT1 Antibody) at dilution of 1:600



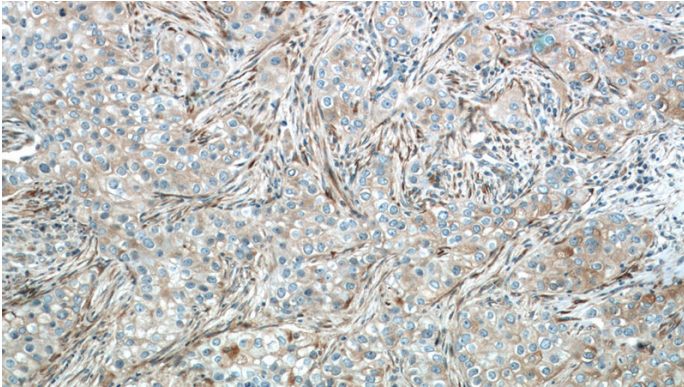
U-937 cells were subjected to SDS PAGE followed

# IFIT1 antibody

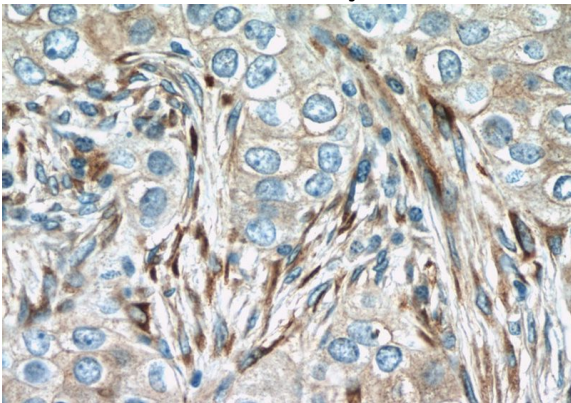
Catalog Number: 111617

---

by western blot with Catalog No:111617(IFIT1 Antibody) at dilution of 1:600

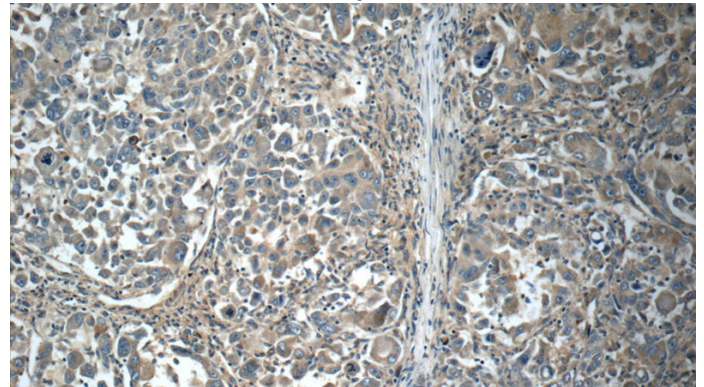


Immunohistochemistry of paraffin-embedded human breast cancer slide using Catalog No:111617(IFIT1 Antibody) at dilution of 1:50

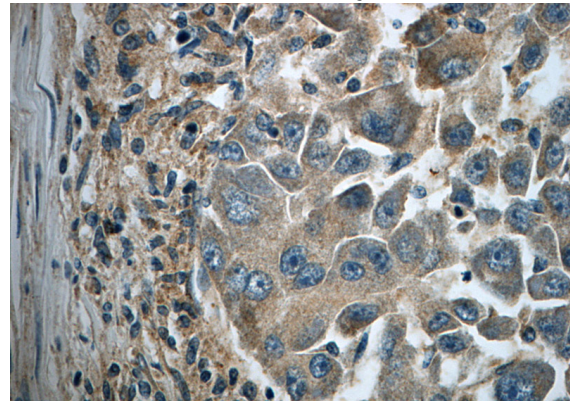


Immunohistochemistry of paraffin-embedded human breast cancer slide using Catalog

No:111617(IFIT1 Antibody) at dilution of 1:50



Immunohistochemistry of paraffin-embedded human liver cancer slide using Catalog No:111617(IFIT1 Antibody) at dilution of 1:50



Immunohistochemistry of paraffin-embedded human liver cancer slide using Catalog No:111617(IFIT1 Antibody) at dilution of 1:50