

IDH1 antibody

Catalog Number: 111602

Product name

IDH1 antibody

Specificity

Human, Mouse, Rat; other species not tested.

Antibody description

IDH1 Rabbit Polyclonal antibody. Positive IHC detected in human gliomas tissue, human liver cancer tissue. Positive WB detected in HepG2 cells, DU 145 cells, HEK-293 cells, MCF7 cells, MCF-7 cells, mouse liver tissue, NIH/3T3 cells. Observed molecular weight by Western-blot: 46kd

Preparation

This antibody was obtained by immunization of IDH1 recombinant protein (Accession Number: NM_005896). Purification method: Antigen affinity purified.

Formulation

PBS with 0.02% sodium azide and 50% glycerol pH 7.3.

Storage

Store at -20°C. DO NOT ALIQUOT

Clonality

Polyclonal

Ig Type

Rabbit IgG

Applications

ELISA, WB, IHC

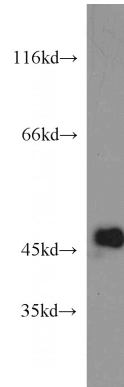
Dilutions

Recommended Dilution:

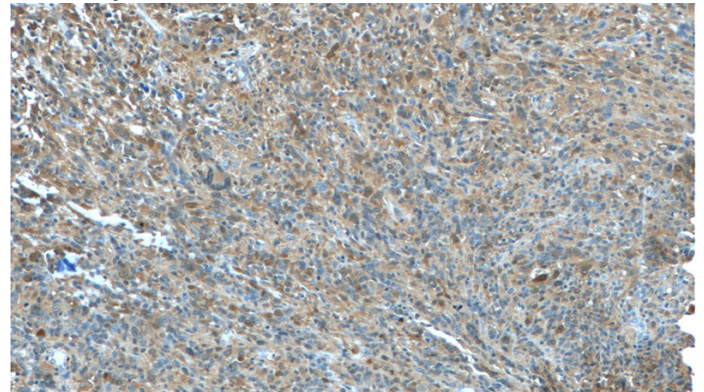
WB: 1:500-1:5000

IHC: 1:20-1:200

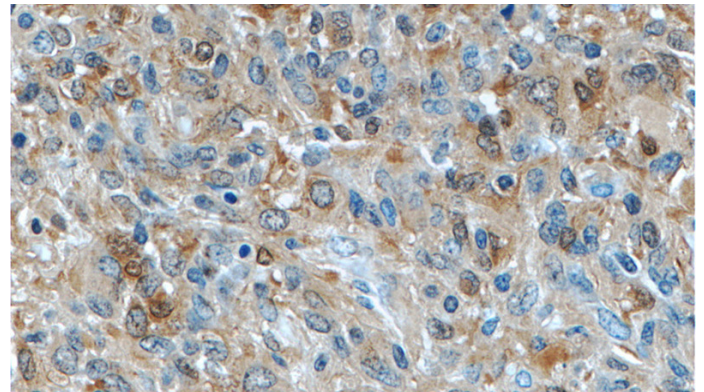
Validations



HepG2 cells were subjected to SDS PAGE followed by western blot with Catalog No:111602(IDH1 antibody) at dilution of 1:2000



Immunohistochemistry of paraffin-embedded human gliomas tissue slide using Catalog No:111602(IDH1 Antibody) at dilution of 1:50 (under 10x lens)



Immunohistochemistry of paraffin-embedded human gliomas tissue slide using Catalog No:111602(IDH1 Antibody) at dilution of 1:50

IDH1 antibody



Catalog Number: 111602

(under 40x lens)