

IDE antibody

Catalog Number: 111600

Product name

IDE antibody

WB: 1:500-1:5000

IP: 1:200-1:2000

Specificity

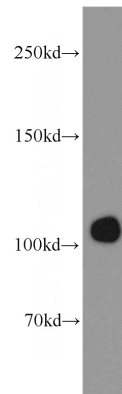
Human, Mouse, Rat; other species not tested.

IHC: 1:20-1:200

Antibody description

IDE Rabbit Polyclonal antibody. Positive IP detected in HepG2 cells. Positive WB detected in HepG2 cells, A2780 cells, DU 145 cells, mouse liver tissue, SH-SY5Y cells. Positive IHC detected in human kidney tissue, human liver tissue. Observed molecular weight by Western-blot: 100-120 kDa

Validations



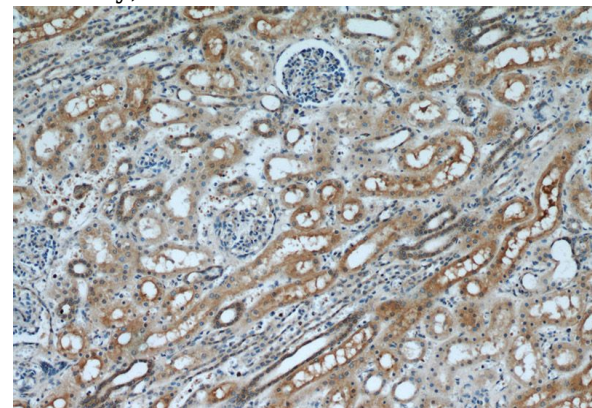
Preparation

This antibody was obtained by immunization of IDE recombinant protein (Accession Number: NM_004969). Purification method: Antigen affinity purified.

HepG2 cells were subjected to SDS PAGE followed by western blot with Catalog No:111600(IDE antibody) at dilution of 1:300

Formulation

PBS with 0.1% sodium azide and 50% glycerol pH 7.3.



Storage

Store at -20°C. DO NOT ALIQUOT

Clonality

Polyclonal

Ig Type

Rabbit IgG

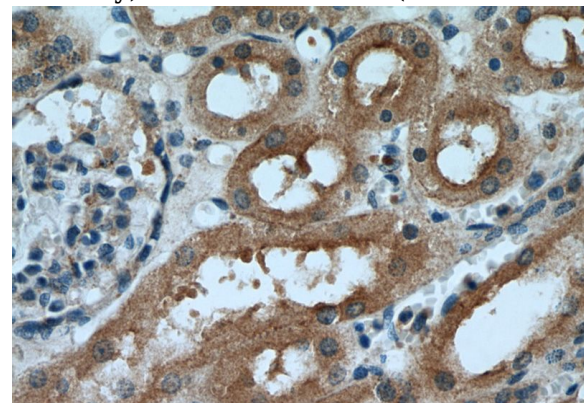
Applications

ELISA, WB, IHC, IP

Dilutions

Recommended Dilution:

Immunohistochemical of paraffin-embedded human kidney using Catalog No:111600(IDE antibody) at dilution of 1:50 (under 10x lens)



IDE antibody

Catalog Number: 111600

Immunohistochemical of paraffin-embedded human kidney using Catalog No:111600(IDE antibody) at dilution of 1:50 (under 40x lens)

IP Result of anti-IDE (IP:Catalog No:111600, 4ug; Detection:Catalog No:111600 1:500) with HepG2 cells lysate 1600ug.

