

HSPA13 antibody

Catalog Number: 111572

Product name

HSPA13 antibody

IP: 1:200-1:1000

IHC: 1:20-1:200

Specificity

Human, Mouse, Rat; other species not tested.

Antibody description

HSPA13 Rabbit Polyclonal antibody. Positive IHC detected in human endometrial cancer tissue. Positive IP detected in HeLa cells. Positive WB detected in human brain tissue, HeLa cells. Observed molecular weight by Western-blot: 60kd

Preparation

This antibody was obtained by immunization of HSPA13 recombinant protein (Accession Number: NM_006948). Purification method: Antigen affinity purified.

Formulation

PBS with 0.1% sodium azide and 50% glycerol pH 7.3.

Storage

Store at -20°C. DO NOT ALIQUOT

Clonality

Polyclonal

Ig Type

Rabbit IgG

Applications

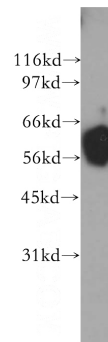
ELISA, WB, IHC, IP

Dilutions

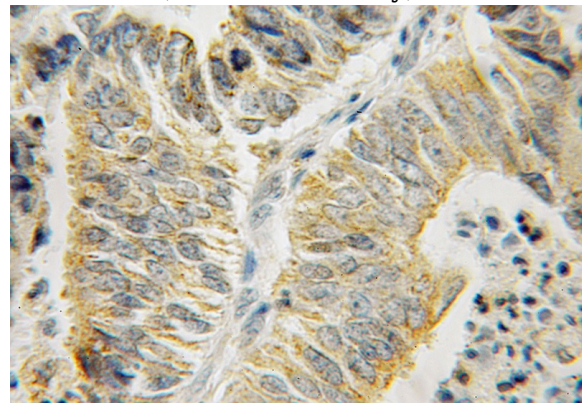
Recommended Dilution:

WB: 1:500-1:5000

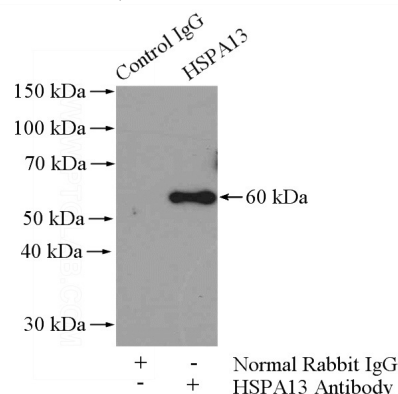
Validations



human brain tissue were subjected to SDS PAGE followed by western blot with Catalog No:111572(HSPA13 antibody) at dilution of 1:500



Immunohistochemical of paraffin-embedded human endometrial cancer using Catalog No:111572(HSPA13 antibody) at dilution of 1:50 (under 10x lens)



IP Result of anti-HSPA13 (IP:Catalog No:111572,

HSPA13 antibody



Catalog Number: 111572

4ug; Detection:Catalog No:111572 1:300) with HeLa cells lysate 1200ug.