

# HSP60 antibody

Catalog Number: 111567

## Product name

HSP60 antibody

WB: 1:1000-1:10000

IP: 1:1000-1:10000

## Specificity

Human, Mouse, Rat; other species not tested.

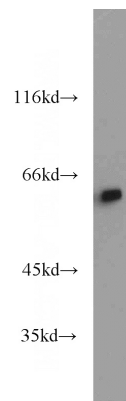
IHC: 1:20-1:200

IF: 1:20-1:200

## Antibody description

HSP60 Rabbit Polyclonal antibody. Positive IF detected in HepG2 cells. Positive IHC detected in human lung cancer tissue. Positive IP detected in HEK-293 cells. Positive WB detected in HeLa cells, HepG2 cells, NIH/3T3 cells, rat heart tissue. Observed molecular weight by Western-blot: 60 kDa

## Validations



## Preparation

This antibody was obtained by immunization of HSP60 recombinant protein (Accession Number: NM\_002156). Purification method: Antigen affinity purified.

HeLa cells were subjected to SDS PAGE followed by western blot with Catalog No:111567(HSPD1 antibody) at dilution of 1:6000

## Formulation

PBS with 0.02% sodium azide and 50% glycerol pH 7.3.

## Storage

Store at -20°C. DO NOT ALIQUOT

## Clonality

Polyclonal

## Ig Type

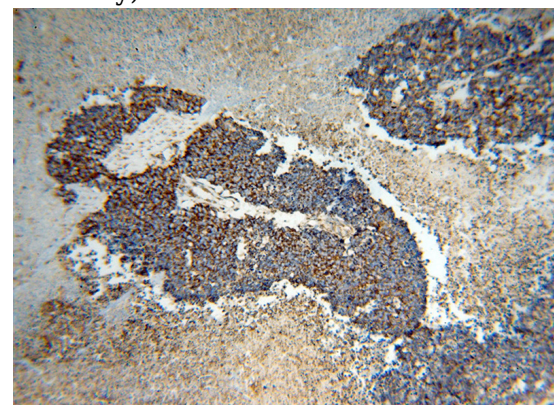
Rabbit IgG

## Applications

ELISA, WB, IHC, IF, IP

## Dilutions

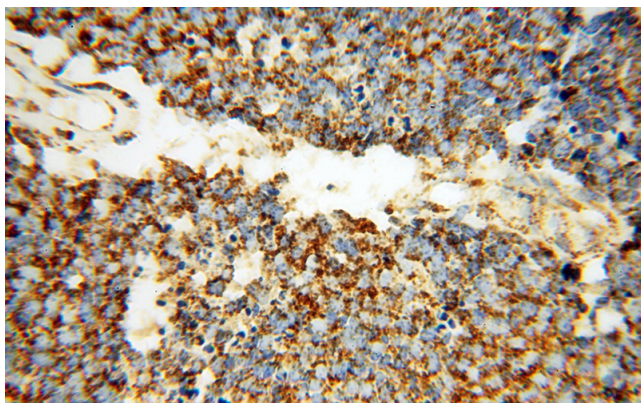
Recommended Dilution:



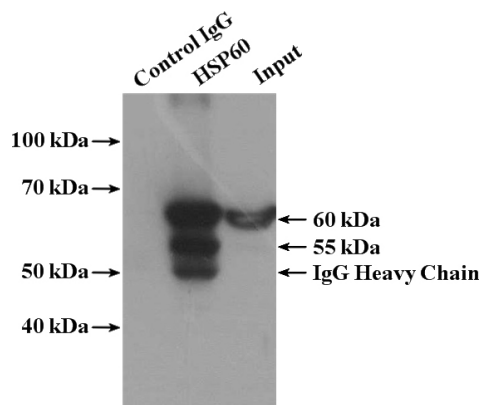
Immunohistochemical of paraffin-embedded human lung cancer using Catalog No:111567(HSPD1 antibody) at dilution of 1:100 (under 10x lens)


# HSP60 antibody

Catalog Number: 111567



Immunohistochemical of paraffin-embedded human lung cancer using Catalog No:111567(HSPD1 antibody) at dilution of 1:100 (under 40x lens)



IP Result of anti-HSPD1 (IP:Catalog No:111567, 4ug; Detection:Catalog No:111567 1:4000) with HEK-293 cells lysate 3680ug. 

Immunofluorescent analysis of (-20oc Ethanol) fixed HepG2 cells using Catalog No:111567(HSPD1 Antibody) at dilution of 1:50 and Alexa Fluor 488-conjugated AffiniPure Goat Anti-Rabbit IgG(H+L)