

HSF1 antibody

Catalog Number: 111556

Product name

HSF1 antibody

WB: 1:500-1:5000

IP: 1:500-1:5000

Specificity

Human, Mouse, Rat; other species not tested.

IHC: 1:20-1:200

IF: 1:20-1:200

Antibody description

HSF1 Rabbit Polyclonal antibody. Positive WB detected in Jurkat cells, A431 cells, HEK-293 cells, HeLa cells, K-562 cells, mouse heart tissue. Positive IP detected in Jurkat cells. Positive IHC detected in human lung cancer tissue, human testis tissue. Positive IF detected in A431 cells. Observed molecular weight by Western-blot: 83kd

Preparation

This antibody was obtained by immunization of HSF1 recombinant protein (Accession Number: NM_005526). Purification method: Antigen affinity purified.

Formulation

PBS with 0.1% sodium azide and 50% glycerol pH 7.3.

Storage

Store at -20°C. DO NOT ALIQUOT

Clonality

Polyclonal

Ig Type

Rabbit IgG

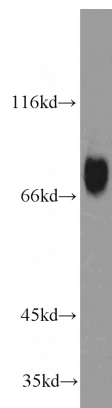
Applications

ELISA, WB, IHC, IF, IP

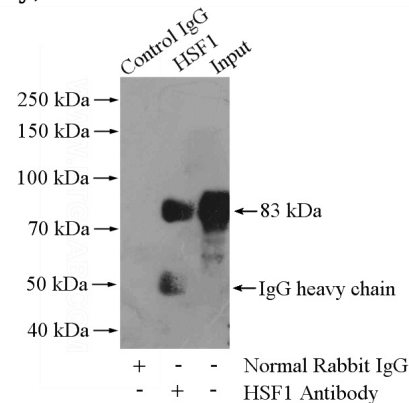
Dilutions

Recommended Dilution:

Validations



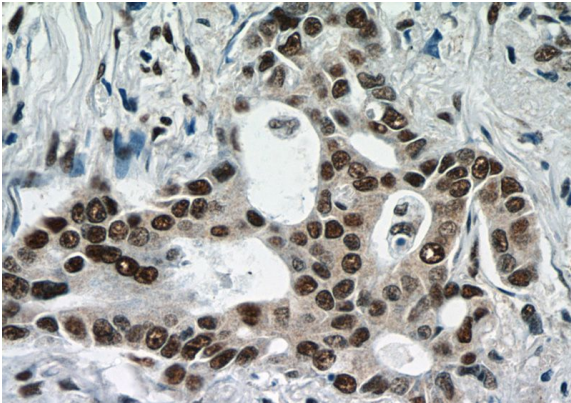
Jurkat cells were subjected to SDS PAGE followed by western blot with Catalog No:111556(HSF1 antibody) at dilution of 1:1000



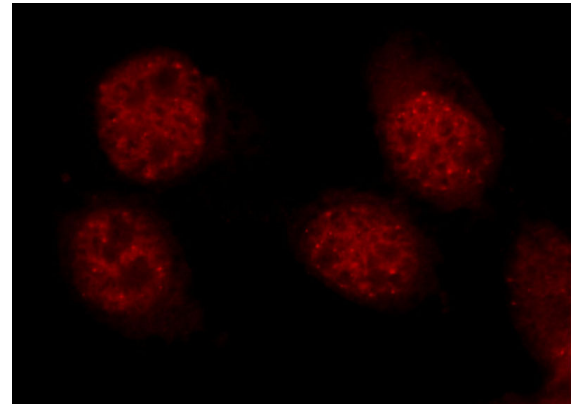
IP Result of anti-HSF1 (IP:Catalog No:111556, 4ug; Detection:Catalog No:111556 1:1000) with Jurkat cells lysate 2400ug.

HSF1 antibody

Catalog Number: 111556



Immunohistochemistry of paraffin-embedded human testis tissue slide using Catalog No:111556(HSF1 Antibody) at dilution of 1:50 (under 40x lens)



Immunofluorescent analysis of A431 cells using Catalog No:111556(HSF1 Antibody) at dilution of 1:50 and Rhodamine-Goat anti-Rabbit IgG

Immunohistochemistry of paraffin-embedded human lung cancer tissue slide using Catalog No:111556(HSF1 Antibody) at dilution of 1:50 (under 40x lens)

