

HSD17B11 antibody



Catalog Number: 111545

Product name

HSD17B11 antibody

IHC: 1:20-1:200

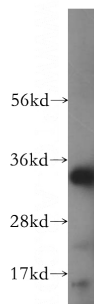
Specificity

human, mouse, rat; other species not tested.

Validations

Antibody description

HSD17B11 Rabbit Polyclonal antibody. Positive WB detected in mouse liver tissue, mouse pancreas tissue. Positive IHC detected in human kidney. Observed molecular weight by Western-blot: 33kd



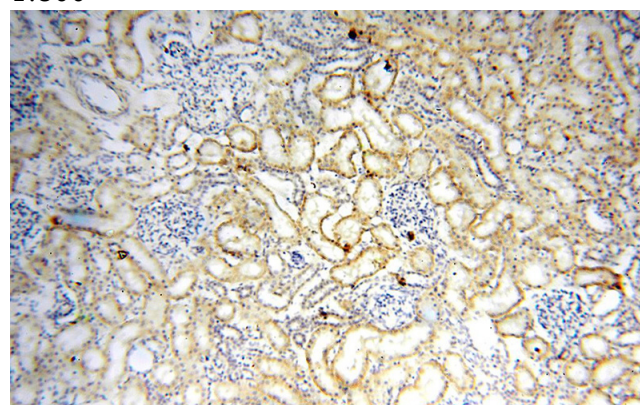
Preparation

This antibody was obtained by immunization of HSD17B11 recombinant protein (Accession Number: NM_016245). Purification method: Antigen affinity purified.

mouse liver tissue were subjected to SDS PAGE followed by western blot with Catalog No:111545(HSD17B11 antibody) at dilution of 1:800

Formulation

PBS with 0.02% sodium azide and 50% glycerol pH 7.3.



Storage

Store at -20°C. DO NOT ALIQUOT

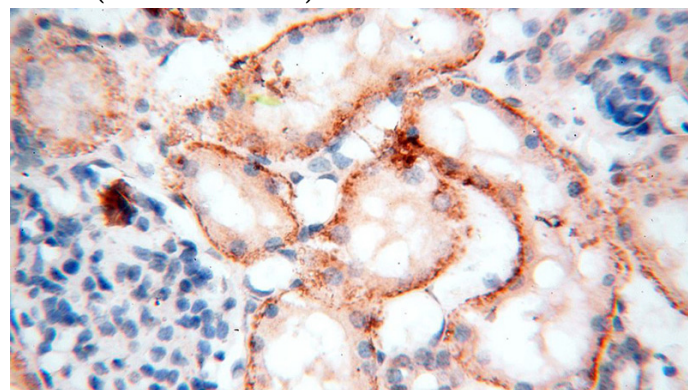
Clonality

Polyclonal

Immunohistochemical of paraffin-embedded human kidney using Catalog No:111545(HSD17B11 antibody) at dilution of 1:100 (under 10x lens)

Ig Type

Rabbit IgG



Applications

ELISA, WB, IHC

Dilutions

Recommended Dilution:

WB: 1:500-1:5000

Immunohistochemical of paraffin-embedded human kidney using Catalog

HSD17B11 antibody



Catalog Number: 111545

No:111545(HSD17B11 antibody) at dilution of 1:100 (under 40x lens)