

HOMER1 antibody

Catalog Number: 111517

Product name

HOMER1 antibody

WB: 1:500-1:5000

IP: 1:200-1:2000

Specificity

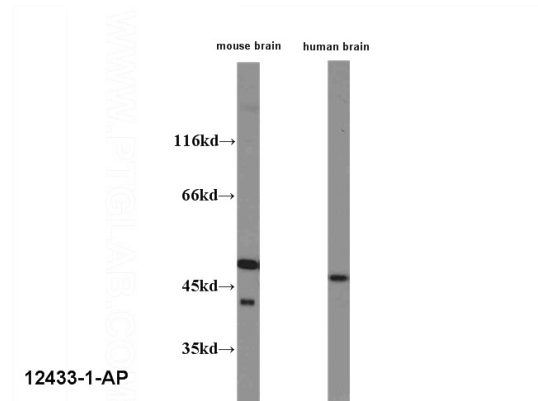
Human, Mouse; other species not tested.

IHC: 1:20-1:200

Antibody description

HOMER1 Rabbit Polyclonal antibody. Positive FC detected in HeLa cells. Positive IHC detected in mouse brain tissue, human ovary tumor tissue, human pancreas tissue. Positive WB detected in human brain tissue, human/mouse brain. Positive IP detected in mouse brain tissue. Observed molecular weight by Western-blot: 46-48 kDa

Validations



Preparation

This antibody was obtained by immunization of HOMER1 recombinant protein (Accession Number: NM_004272). Purification method: Antigen affinity purified.

WB result of anti-HOMER1 (Catalog No:) with mouse brain lysate and human brain lysate.



Formulation

PBS with 0.1% sodium azide and 50% glycerol pH 7.3.

Storage

Store at -20°C. DO NOT ALIQUOT

Clonality

Polyclonal

Ig Type

Rabbit IgG

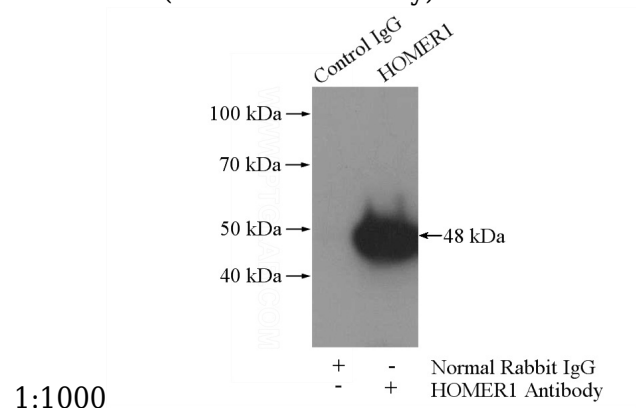
Applications

ELISA, WB, FC, IHC, IP

Dilutions

Recommended Dilution:

human brain tissue were subjected to SDS PAGE followed by western blot with Catalog No:111517(HOMER1 antibody) at dilution of

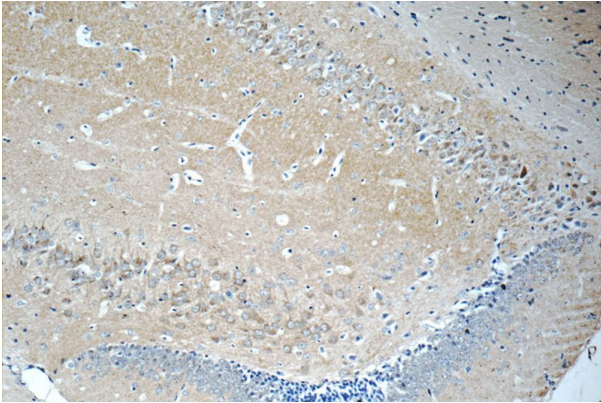


IP Result of anti-HOMER1 (IP:Catalog No:111517,

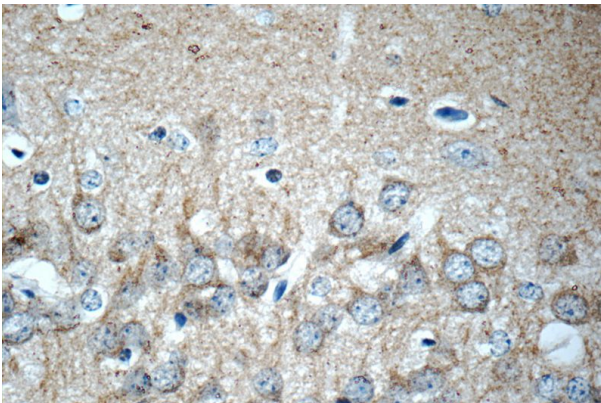
HOMER1 antibody

Catalog Number: 111517

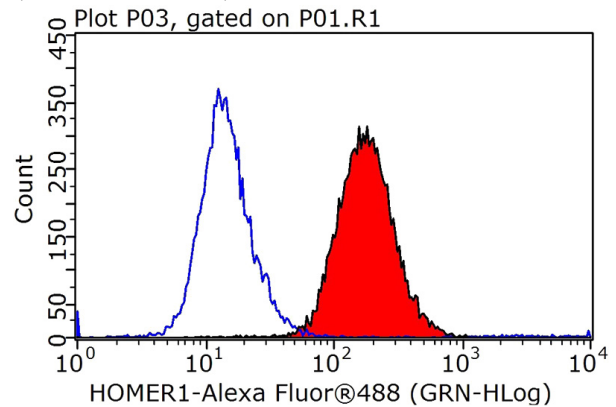
4ug; Detection:Catalog No:111517 1:800) with mouse brain tissue lysate 4000ug.



Immunohistochemistry of paraffin-embedded mouse brain tissue slide using Catalog No:111517(HOMER1 Antibody) at dilution of 1:50 (under 10x lens)



Immunohistochemistry of paraffin-embedded mouse brain tissue slide using Catalog No:111517(HOMER1 Antibody) at dilution of 1:50 (under 40x lens)



1X10⁶ HeLa cells were stained with 0.2ug HOMER1 antibody (Catalog No:111517, red) and control antibody (blue). Fixed with 90% MeOH blocked with 3% BSA (30 min). Alexa Fluor 488-conjugated AffiniPure Goat Anti-Rabbit IgG(H+L) with dilution 1:1000.