

HMGCS1 antibody

Catalog Number: 111485

Product name

HMGCS1 antibody

IP: 1:500-1:5000

IF: 1:10-1:100

Specificity

Human, Mouse, Rat; other species not tested.

Antibody description

HMGCS1 Rabbit Polyclonal antibody. Positive IF detected in HepG2 cells. Positive IP detected in mouse liver tissue. Positive WB detected in A431 cells, HepG2 cells, mouse liver tissue. Observed molecular weight by Western-blot: 57 kDa

Preparation

This antibody was obtained by immunization of HMGCS1 recombinant protein (Accession Number: NM_001330663). Purification method: Antigen affinity purified.

Formulation

PBS with 0.02% sodium azide and 50% glycerol pH 7.3.

Storage

Store at -20°C. DO NOT ALIQUOT

Clonality

Polyclonal

Ig Type

Rabbit IgG

Applications

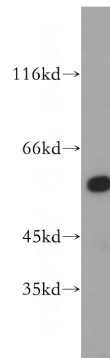
ELISA, WB, IF, IP

Dilutions

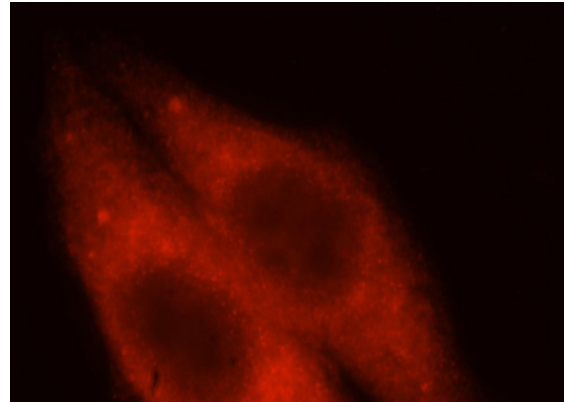
Recommended Dilution:

WB: 1:1000-1:10000

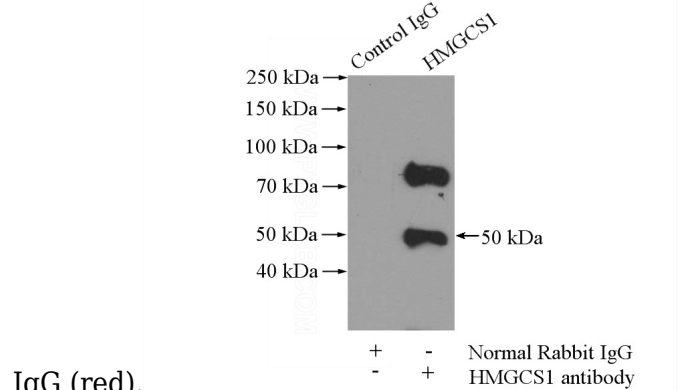
Validations



A431 cells were subjected to SDS PAGE followed by western blot with Catalog No:111485(HMGCS1 antibody) at dilution of 1:500



Immunofluorescent analysis of HepG2 cells, using HMGCS1 antibody Catalog No:111485 at 1:25 dilution and Rhodamine-labeled goat anti-rabbit



IgG (red).

IP Result of anti-HMGCS1 (IP:Catalog No:111485,

HMGCS1 antibody



Catalog Number: 111485

3ug; Detection:Catalog No:111485 1:1000) with mouse liver tissue lysate 4000ug.