

# HMG20B antibody



Catalog Number: 111476

## Product name

HMG20B antibody

## Immunogen

[Human HMG20B Recombinant protein \(His tag\)](#)

## Specificity

Human, Mouse, Rat; other species not tested.

## Antibody description

HMG20B Rabbit Polyclonal antibody. Positive IP detected in HeLa cells. Positive WB detected in HeLa cells. Positive IF detected in HeLa cells. Positive IHC detected in human colon cancer tissue. Observed molecular weight by Western-blot: 35-36 kDa

## Preparation

This antibody was obtained by immunization of HMG20B recombinant protein (Accession Number: NM\_006339). Purification method: Antigen affinity purified.

## Formulation

PBS with 0.02% sodium azide and 50% glycerol pH 7.3.

## Storage

Store at -20°C. DO NOT ALIQUOT

## Clonality

Polyclonal

## Ig Type

Rabbit IgG

## Applications

ELISA, WB, IHC, IP, IF

## Dilutions

Recommended Dilution:

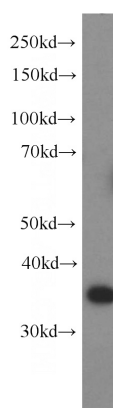
WB: 1:200-1:2000

IP: 1:200-1:2000

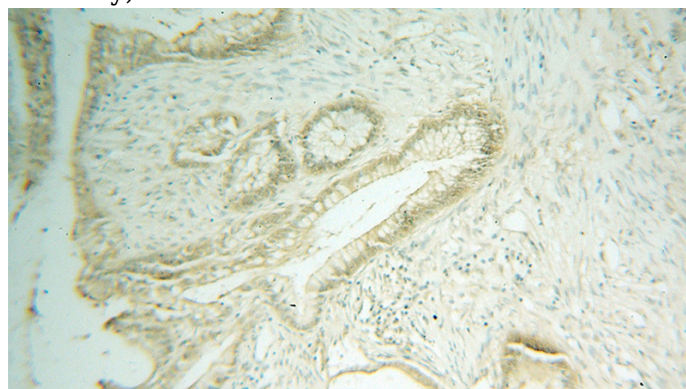
IHC: 1:20-1:200

IF: 1:50-1:500

## Validations



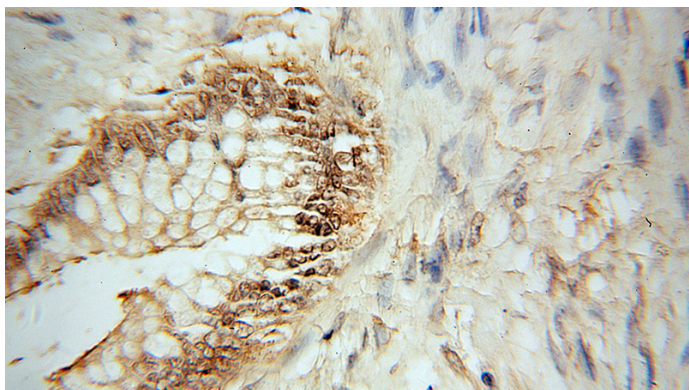
HeLa cells were subjected to SDS PAGE followed by western blot with Catalog No:111476(HMG20B antibody) at dilution of 1:800



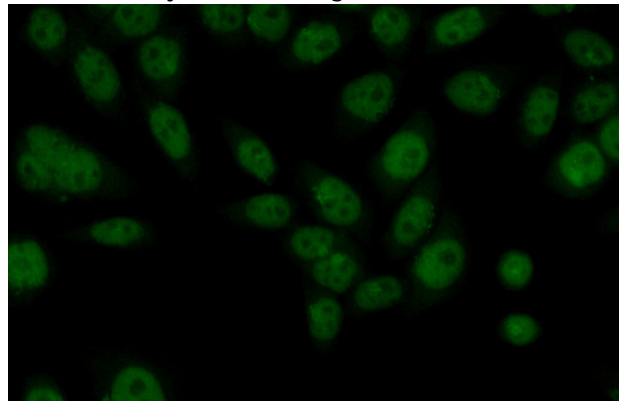
Immunohistochemical of paraffin-embedded human colon cancer using Catalog No:111476(HMG20B antibody) at dilution of 1:50 (under 10x lens)

# HMG20B antibody

Catalog Number: 111476



IP Result of anti-HMG20B (IP:Catalog No:111476, 4ug; Detection:Catalog No:111476 1:800) with HeLa cells lysate 1200ug.



Immunohistochemical of paraffin-embedded human colon cancer using Catalog No:111476(HMG20B antibody) at dilution of 1:50

Immunofluorescent analysis of (10% Formaldehyde) fixed HeLa cells using Catalog No:111476(HMG20B Antibody) at dilution of 1:50 and Alexa Fluor 488-conjugated AffiniPure Goat Anti-Rabbit IgG(H+L)

