

# HRP 2 antibody



Catalog Number: 111465

## Product name

HRP 2 antibody

IP: 1:200-1:2000

IF: 1:50-1:500

## Specificity

Human, Mouse, Rat; other species not tested.

## Antibody description

HRP 2 Rabbit Polyclonal antibody. Positive WB detected in HepG2 cells, HeLa cells, human liver tissue, Y79 cells. Positive IP detected in HepG2 cells. Positive IF detected in HepG2 cells. Observed molecular weight by Western-blot: 110-120 kDa

## Preparation

This antibody was obtained by immunization of HRP 2 recombinant protein (Accession Number: NM\_032631). Purification method: Antigen affinity purified.

## Formulation

PBS with 0.02% sodium azide and 50% glycerol pH 7.3.

## Storage

Store at -20°C. DO NOT ALIQUOT

## Clonality

Polyclonal

## Ig Type

Rabbit IgG

## Applications

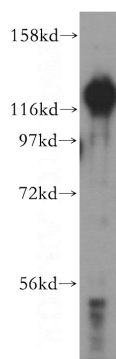
ELISA, WB, IP, IF

## Dilutions

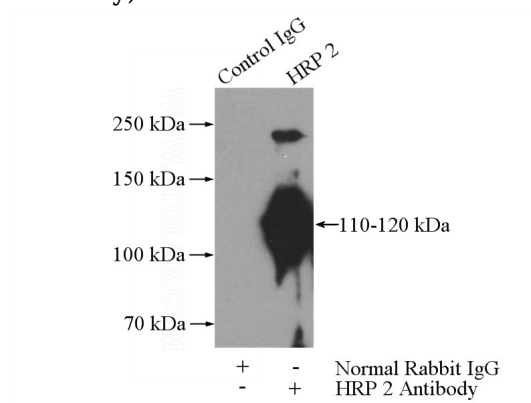
Recommended Dilution:

WB: 1:500-1:5000

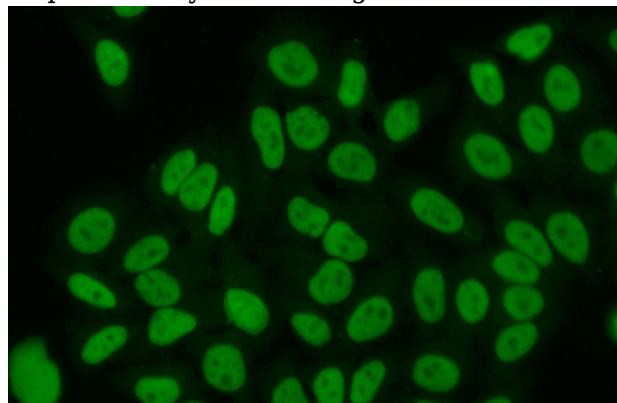
## Validations



HepG2 cells were subjected to SDS PAGE followed by western blot with Catalog No:111465(HDGF2 antibody) at dilution of 1:500



IP Result of anti-HDGF2 (IP:Catalog No:111465, 4ug; Detection:Catalog No:111465 1:500) with HepG2 cells lysate 3200ug.



Immunofluorescent analysis of (10% Formaldehyde) fixed HepG2 cells using Catalog

# HRP 2 antibody



Catalog Number: 111465

---

No:111465(HDGF2 Antibody) at dilution of 1:50

and Alexa Fluor 488-conjugated AffiniPure Goat  
Anti-Rabbit IgG(H+L)