

# HPSE2 antibody



Catalog Number: 111458

## Product name

Polyclonal

HPSE2 antibody

## Ig Type

## Specificity

Rabbit IgG

Human, Mouse, Rat; other species not tested.

## Applications

## Antibody description

ELISA, WB

HPSE2 Rabbit Polyclonal antibody. Positive WB detected in L02 cells. Observed molecular weight by Western-blot: 54kd, 66kd

## Dilutions

Recommended Dilution:

## Preparation

WB: 1:200-1:2000

This antibody was obtained by immunization of HPSE2 recombinant protein (Accession Number: NM\_021828). Purification method: Antigen affinity purified.

## Validations

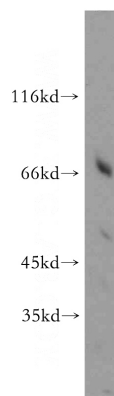
## Formulation

PBS with 0.02% sodium azide and 50% glycerol pH 7.3.

## Storage

Store at -20°C. DO NOT ALIQUOT

## Clonality



L02 cells were subjected to SDS PAGE followed by western blot with Catalog No:111458(HPSE2 antibody) at dilution of 1:300