

Histone H2B antibody



Catalog Number: 111406

Product name

Histone H2B antibody

IP: 1:200-1:2000

IHC: 1:20-1:200

Specificity

Human; other species not tested.

Antibody description

Histone H2B Rabbit Polyclonal antibody. Positive WB detected in Transfected HEK-293 cells. Positive IP detected in HEK-293 cells. Positive IHC detected in human pancreas tissue, human breast cancer tissue.

Preparation

This antibody was obtained by immunization of Histone H2B recombinant protein (Accession Number: NM_003528). Purification method: Antigen affinity purified.

Formulation

PBS with 0.02% sodium azide and 50% glycerol pH 7.3.

Storage

Store at -20°C. DO NOT ALIQUOT

Clonality

Polyclonal

Ig Type

Rabbit IgG

Applications

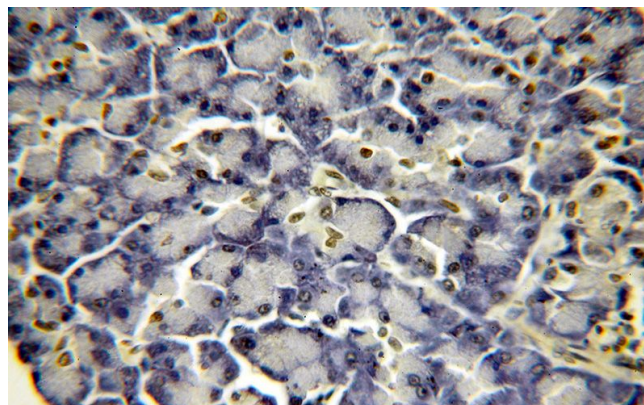
ELISA, IHC, WB, IP

Dilutions

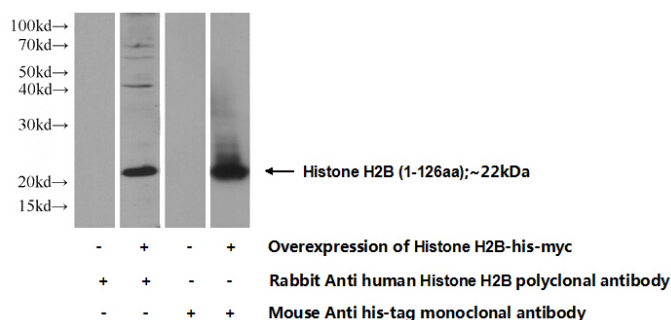
Recommended Dilution:

WB: 1:500-1:5000

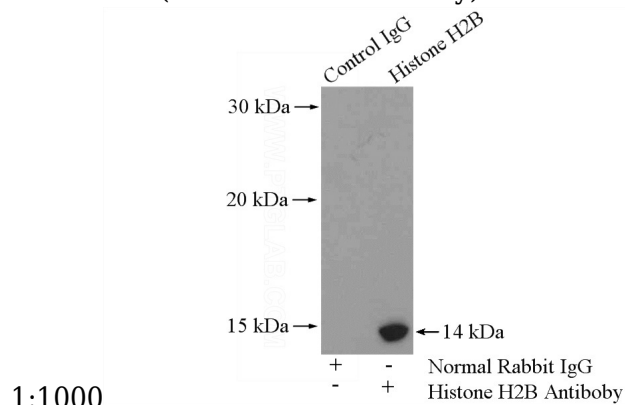
Validations



Immunohistochemical of paraffin-embedded human pancreas using Catalog No:111406(HIST2H2BE antibody) at dilution of 1:100 (under 40x lens)



Transfected HEK-293 cells were subjected to SDS PAGE followed by western blot with Catalog No:111406(Histone H2B Antibody) at dilution of



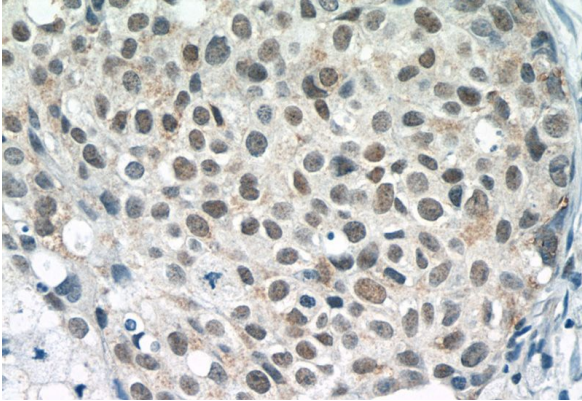
IP Result of anti-Histone H2B (IP:Catalog No:111406, 4ug; Detection:Catalog No:111406)

Histone H2B antibody



Catalog Number: 111406

1:500) with HEK-293 cells lysate 2000ug.



Immunohistochemistry of paraffin-embedded human breast cancer tissue slide using Catalog No:111406(Histone H2B Antibody) at dilution of 1:50 (under 40x lens)