

Histone H2A.X antibody



Catalog Number: 111404

Product name

Histone H2A.X antibody

WB: 1:200-1:2000

IHC: 1:20-1:200

Specificity

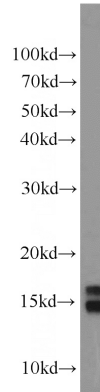
Human, Mouse, Rat; other species not tested.

IF: 1:10-1:100

Antibody description

Histone H2A.X Rabbit Polyclonal antibody. Positive FC detected in HepG2 cells. Positive IHC detected in human lymphoma tissue. Positive IF detected in HepG2 cells. Positive WB detected in Raji cells, HEK-293 cells, HL-60 cells, mouse heart tissue. Observed molecular weight by Western-blot: 15-18kd

Validations



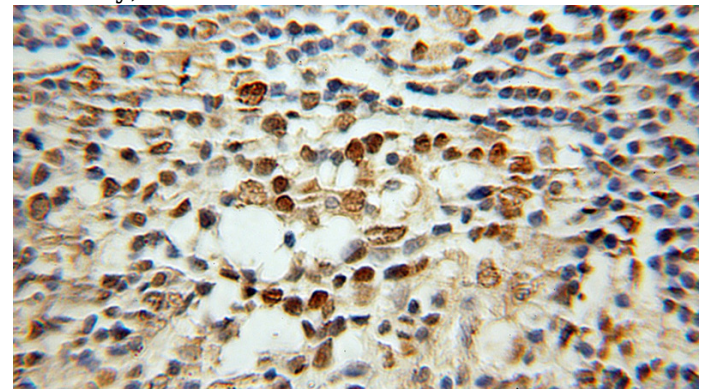
Preparation

This antibody was obtained by immunization of Histone H2A.X recombinant protein (Accession Number: NM_002105). Purification method: Antigen affinity purified.

Raji cells were subjected to SDS PAGE followed by western blot with Catalog No:111404(H2AFX antibody) at dilution of 1:1000

Formulation

PBS with 0.1% sodium azide and 50% glycerol pH 7.3.



Storage

Store at -20°C. DO NOT ALIQUOT

Clonality

Polyclonal

Immunohistochemical of paraffin-embedded human lymphoma using Catalog No:111404(H2AFX antibody) at dilution of 1:100 (under 10x lens)

Ig Type

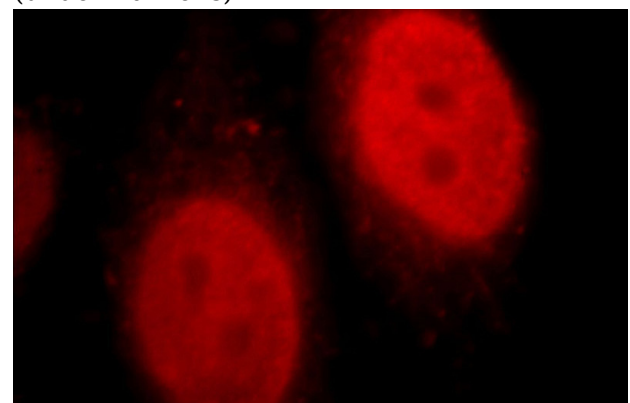
Rabbit IgG

Applications

ELISA, WB, IHC, IF, FC

Dilutions

Recommended Dilution:



Histone H2A.X antibody



Catalog Number: 111404

Immunofluorescent analysis of HepG2 cells, using H2AFX antibody Catalog No:111404 at 1:25 dilution and Rhodamine-labeled goat anti-rabbit IgG (red).

1X10⁶ HepG2 cells were stained with 0.2ug Histone H2A.X antibody (Catalog No:111404, red) and control antibody (blue). Fixed with 90% MeOH blocked with 3% BSA (30 min). Alexa Fluor 488-conjugated AffiniPure Goat Anti-Rabbit IgG(H+L) with dilution 1:1000.

