

Histone H1.2 antibody



Catalog Number: 111403

Product name

Histone H1.2 antibody

WB: 1:500-1:5000

IP: 1:200-1:2000

Specificity

Human, Mouse, Rat; other species not tested.

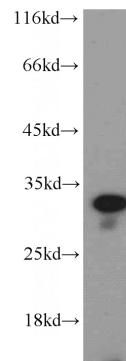
IHC: 1:20-1:200

IF: 1:10-1:100

Antibody description

Histone H1.2 Rabbit Polyclonal antibody. Positive IHC detected in human ovary tumor tissue. Positive IF detected in HeLa cells. Positive IP detected in HeLa cells. Positive WB detected in L02 cells, A375 cells, human testis tissue, Jurkat cells, MCF7 cells, mouse thymus tissue. Observed molecular weight by Western-blot: 32-33kd

Validations



Preparation

This antibody was obtained by immunization of Histone H1.2 recombinant protein (Accession Number: BC002649). Purification method: Antigen affinity purified.

L02 cells were subjected to SDS PAGE followed by western blot with Catalog No:111403(HIST1H1C antibody) at dilution of 1:500

Formulation

PBS with 0.02% sodium azide and 50% glycerol pH 7.3.

Storage

Store at -20°C. DO NOT ALIQUOT

Clonality

Polyclonal

Ig Type

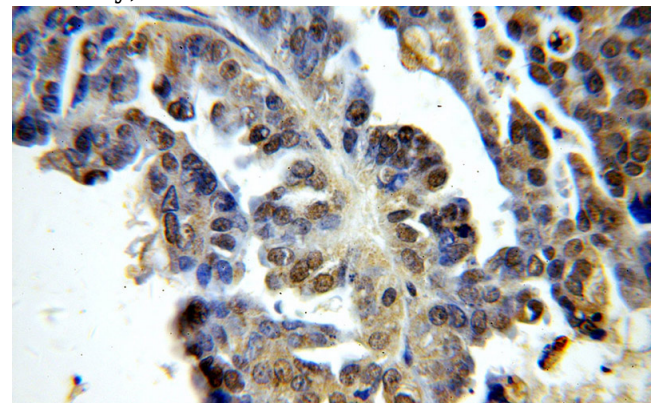
Rabbit IgG

Applications

ELISA, WB, IHC, IF, IP

Dilutions

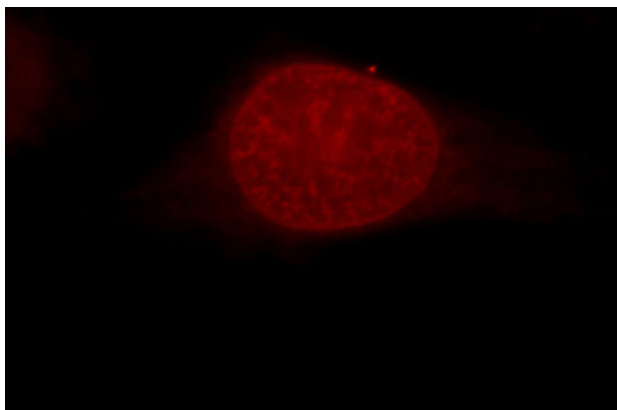
Recommended Dilution:



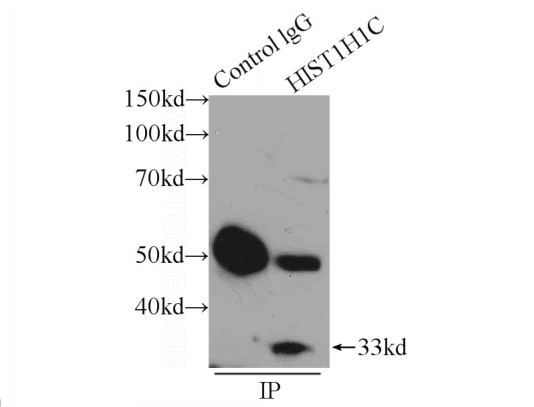
Immunohistochemical of paraffin-embedded human ovary tumor using Catalog No:111403(HIST1H1C antibody) at dilution of 1:100 (under 40x lens)

Histone H1.2 antibody

Catalog Number: 111403



Immunofluorescent analysis of HeLa cells, using HIST1H1C antibody Catalog No:111403 at 1:25 dilution and Rhodamine-labeled goat anti-rabbit



IgG (red).

IP Result of anti-Histone H1.2 (IP:Catalog No:111403, 3ug; Detection:Catalog No:111403 1:500) with HeLa cells lysate 1600ug.