

# HELLS antibody

Catalog Number: 111400

## Product name

HELLS antibody

WB: 1:1000-1:10000

IP: 1:500-1:5000

## Specificity

Human, Mouse, Rat; other species not tested.

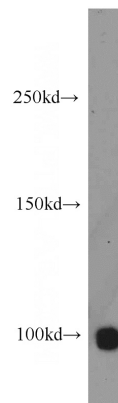
IHC: 1:20-1:200

IF: 1:10-1:100

## Antibody description

HELLS Rabbit Polyclonal antibody. Positive IHC detected in human prostate cancer tissue. Positive IF detected in HepG2 cells. Positive IP detected in mouse testis tissue. Positive WB detected in K-562 cells, DU 145 cells, mouse testis tissue, mouse thymus tissue, PC-3 cells. Observed molecular weight by Western-blot: 97kd

## Validations



## Preparation

This antibody was obtained by immunization of HELLS recombinant protein (Accession Number: BC031004). Purification method: Antigen affinity purified.

K-562 cells were subjected to SDS PAGE followed by western blot with Catalog No:111400(HELLS antibody) at dilution of 1:500

## Formulation

PBS with 0.1% sodium azide and 50% glycerol pH 7.3.

## Storage

Store at -20°C. DO NOT ALIQUOT

## Clonality

Polyclonal

## Ig Type

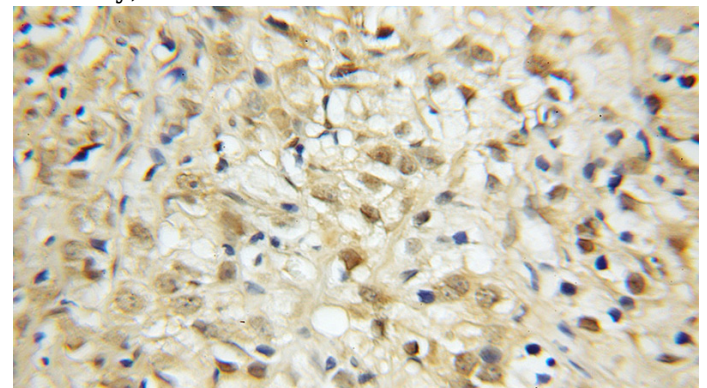
Rabbit IgG

## Applications

ELISA, WB, IHC, IF, IP

## Dilutions

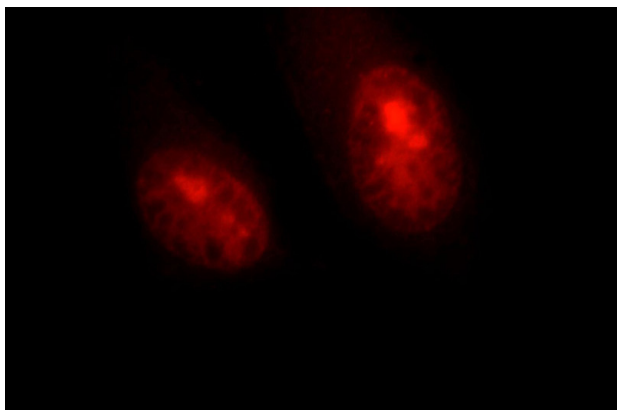
Recommended Dilution:



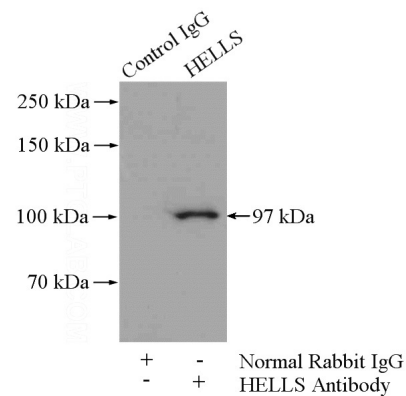
Immunohistochemical of paraffin-embedded human prostate cancer using Catalog No:111400(HELLS antibody) at dilution of 1:100 (under 10x lens)

# HELLS antibody

Catalog Number: 111400



Immunofluorescent analysis of HepG2 cells, using HELLs antibody Catalog No:111400 at 1:25 dilution and Rhodamine-labeled goat anti-rabbit



IgG (red).

IP Result of anti-HELLs (IP:Catalog No:111400, 4ug; Detection:Catalog No:111400 1:1000) with mouse testis tissue lysate 4000ug.