

HDHD2 antibody



Catalog Number: 111388

Product name

HDHD2 antibody

Specificity

Human, Mouse; other species not tested.

Antibody description

HDHD2 Rabbit Polyclonal antibody. Positive IF detected in HepG2 cells. Positive WB detected in mouse liver tissue, HepG2 cells. Observed molecular weight by Western-blot: 18 kDa, 28 kDa

Preparation

This antibody was obtained by immunization of HDHD2 recombinant protein (Accession Number: XM_006722557). Purification method: Antigen affinity purified.

Formulation

PBS with 0.1% sodium azide and 50% glycerol pH 7.3.

Storage

Store at -20°C. DO NOT ALIQUOT

Clonality

Polyclonal

Ig Type

Rabbit IgG

Applications

ELISA, WB, IF

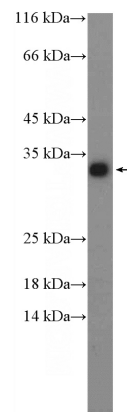
Dilutions

Recommended Dilution:

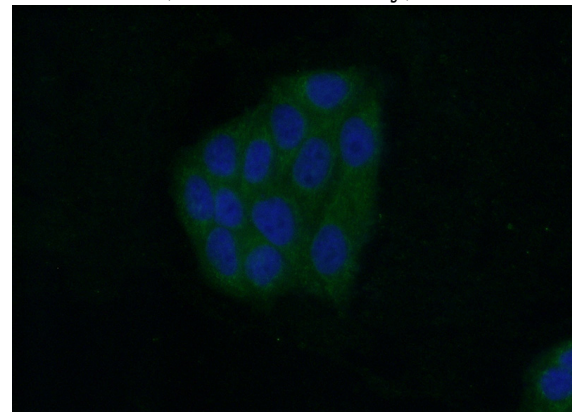
WB: 1:500-1:5000

IF: 1:50-1:500

Validations



mouse liver tissue were subjected to SDS PAGE followed by western blot with Catalog No:111388(HDHD2 Antibody) at dilution of 1:1000



Immunofluorescent analysis of (10% Formaldehyde) fixed HepG2 cells using Catalog No:111388(HDHD2 Antibody) at dilution of 1:50 and Alexa Fluor 488-conjugated AffiniPure Goat Anti-Rabbit IgG(H+L)