

# HDGF antibody

Catalog Number: 111386

## Product name

HDGF antibody

## Specificity

Human; other species not tested.

## Antibody description

HDGF Rabbit Polyclonal antibody. Positive IF detected in HeLa cells. Positive IHC detected in human lung cancer tissue, human colon cancer tissue, human liver cancer tissue, human ovary tumor tissue. Positive WB detected in HeLa cells, A549 cells, HepG2 cells. Positive IP detected in HepG2 cells. Observed molecular weight by Western-blot: 40 kDa

## Preparation

This antibody was obtained by immunization of HDGF recombinant protein (Accession Number: NM\_004494). Purification method: Antigen affinity purified.

## Formulation

PBS with 0.1% sodium azide and 50% glycerol pH 7.3.

## Storage

Store at -20°C. DO NOT ALIQUOT

## Clonality

Polyclonal

## Ig Type

Rabbit IgG

## Applications

ELISA, IP, WB, IHC, IF

## Dilutions

Recommended Dilution:

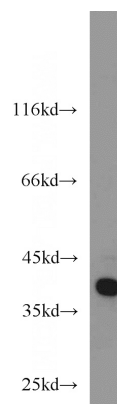
WB: 1:1000-1:10000

IP: 1:500-1:5000

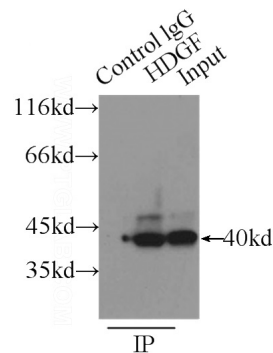
IHC: 1:20-1:200

IF: 1:50-1:500

## Validations



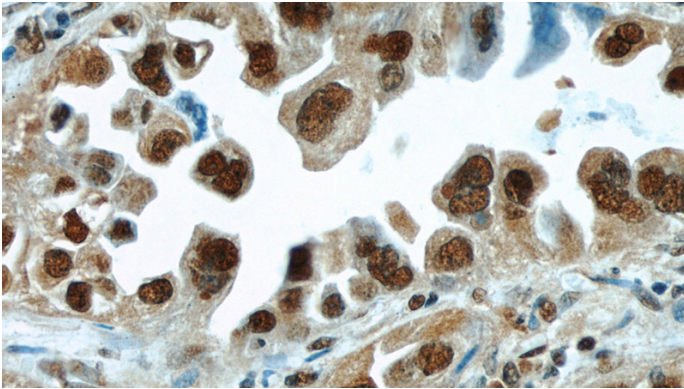
HeLa cells were subjected to SDS PAGE followed by western blot with Catalog No:111386(HDGF antibody) at dilution of 1:2000



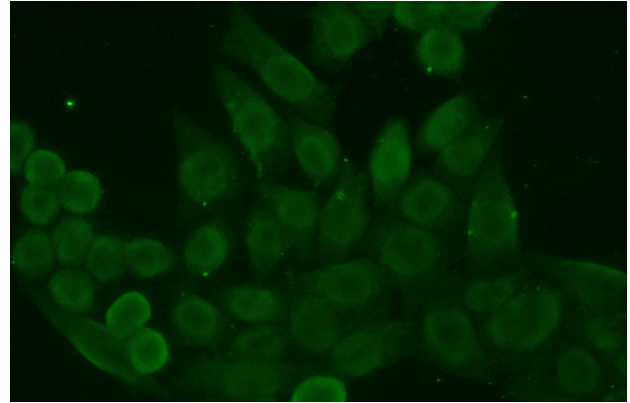
IP Result of anti-HDGF (IP:Catalog No:111386, 3ug; Detection:Catalog No:111386 1:1000) with HepG2 cells lysate 3000ug.

# HDGF antibody

Catalog Number: 111386

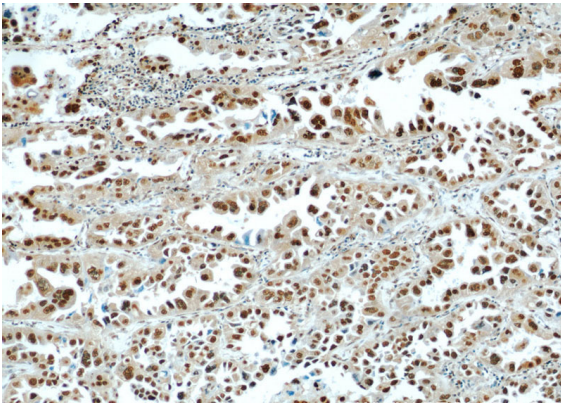


Immunohistochemical of paraffin-embedded human ovary tumor using Catalog No:111386(HDGF antibody) at dilution of 1:100 (under 40x lens)

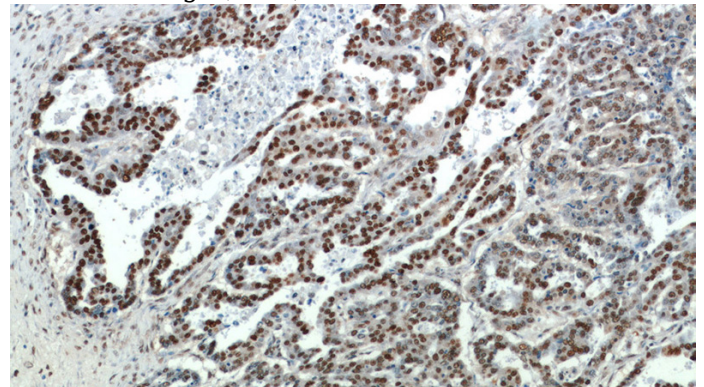
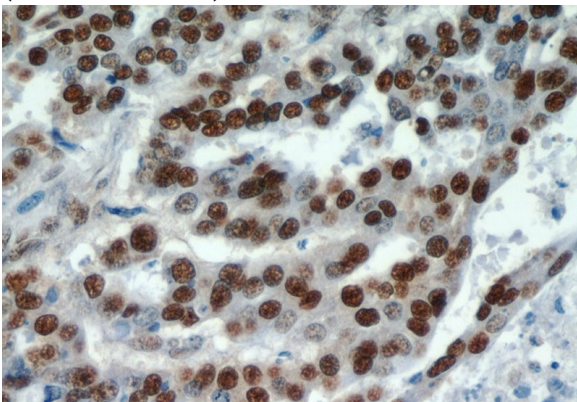


Immunofluorescent analysis of (10% Formaldehyde) fixed HeLa cells using Catalog No:111386(HDGF Antibody) at dilution of 1:50 and Alexa Fluor 488-conjugated AffiniPure Goat Anti-Rabbit IgG(H+L)

Immunohistochemical of paraffin-embedded human lung cancer using Catalog No:111386(HDGF antibody) at dilution of 1:100 (under 40x lens)



Immunohistochemical of paraffin-embedded human lung cancer using Catalog No:111386(HDGF antibody) at dilution of 1:100 (under 10x lens)



Immunohistochemical of paraffin-embedded human ovary tumor using Catalog No:111386(HDGF antibody) at dilution of 1:100 (under 10x lens)