

# hIST1 antibody

Catalog Number: 111358

## Product name

hIST1 antibody

WB: 1:500-1:5000

IP: 1:500-1:5000

## Specificity

Human, Mouse, Rat; other species not tested.

IHC: 1:20-1:200

IF: 1:10-1:100

## Antibody description

hIST1 Rabbit Polyclonal antibody. Positive IF detected in HepG2 cells. Positive IHC detected in human kidney tissue, human hepat°Cirrhosis tissue. Positive WB detected in mouse liver tissue, HeLa cells, mouse brain tissue, PC-3 cells. Positive IP detected in mouse liver tissue. Observed molecular weight by Western-blot: 40 kDa

## Preparation

This antibody was obtained by immunization of hIST1 recombinant protein (Accession Number: NM\_001270977). Purification method: Antigen affinity purified.

## Formulation

PBS with 0.1% sodium azide and 50% glycerol pH 7.3.

## Storage

Store at -20°C. DO NOT ALIQUOT

## Clonality

Polyclonal

## Ig Type

Rabbit IgG

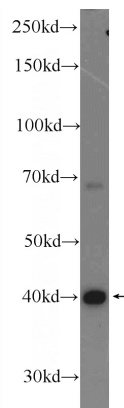
## Applications

ELISA, IHC, WB, IF, IP

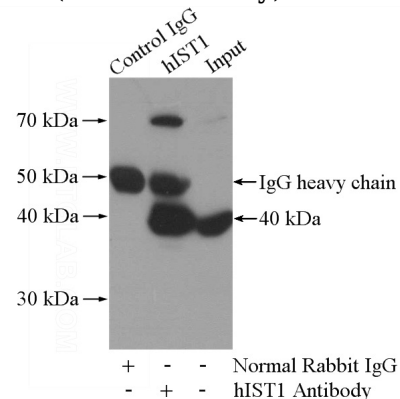
## Dilutions

Recommended Dilution:

## Validations



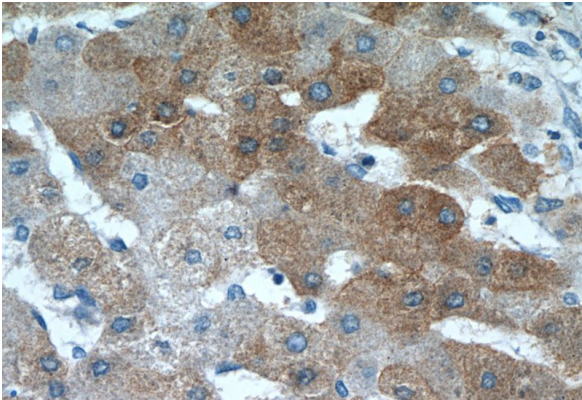
mouse liver tissue were subjected to SDS PAGE followed by western blot with Catalog No:111358(hIST1 Antibody) at dilution of 1:1000



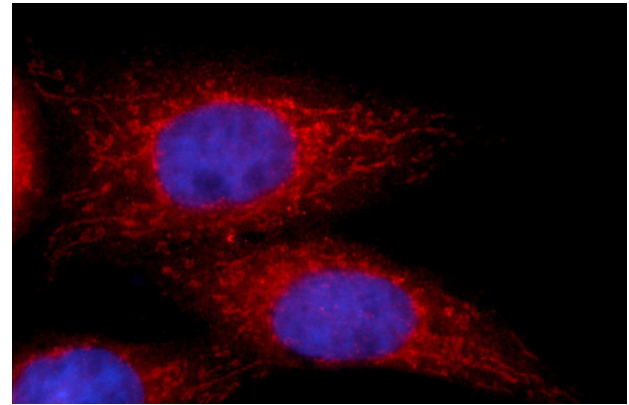
IP Result of anti-hIST1 (IP:Catalog No:111358, 4ug; Detection:Catalog No:111358 1:1000) with mouse liver tissue lysate 4000ug.

# hIST1 antibody

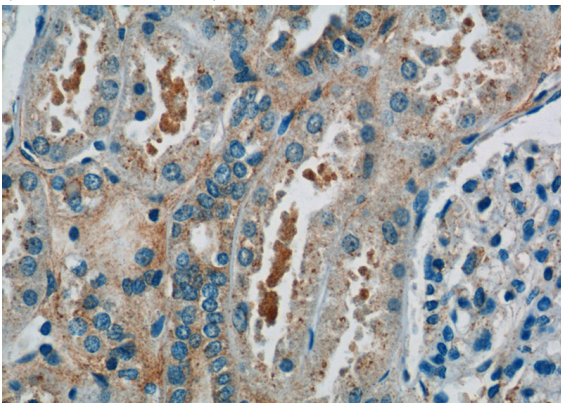
Catalog Number: 111358



Immunohistochemistry of paraffin-embedded human kidney tissue slide using Catalog No:111358(hIST1 Antibody) at dilution of 1:50 (under 40x lens)



Immunohistochemistry of paraffin-embedded human hepatocirrhosis tissue slide using Catalog No:111358(hIST1 Antibody) at dilution of 1:50 (under 40x lens)



Immunofluorescent analysis of HepG2 cells using Catalog No:111358(hIST1 Antibody) at dilution of 1:25 and Alexa Fluor 594-conjugated AffiniPure Goat Anti-Rabbit IgG(H+L)