

# Hikeshi antibody

Catalog Number: 111349

## Product name

Hikeshi antibody

IP: 1:200-1:2000

IHC: 1:20-1:200

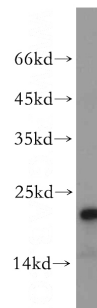
## Specificity

Human, Mouse, Rat; other species not tested.

## Antibody description

Hikeshi Rabbit Polyclonal antibody. Positive IHC detected in human kidney tissue. Positive WB detected in mouse kidney tissue, A375 cells, mouse brain tissue, PC-3 cells. Positive IP detected in mouse brain tissue. Observed molecular weight by Western-blot: 22kd

## Validations



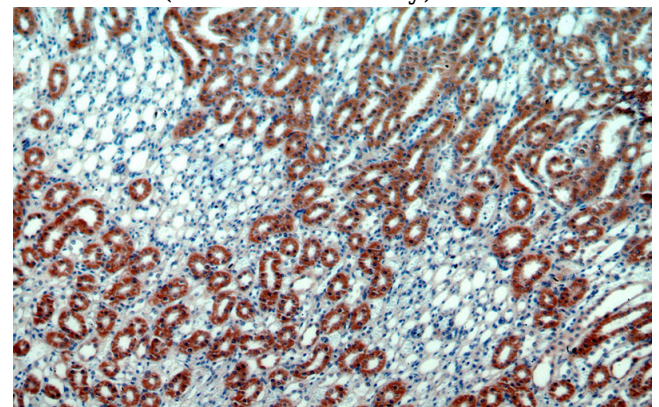
## Preparation

This antibody was obtained by immunization of Hikeshi recombinant protein (Accession Number: NM\_016401). Purification method: Antigen affinity purified.

mouse kidney tissue were subjected to SDS PAGE followed by western blot with Catalog No:111349(C11orf73 antibody) at dilution of 1:500

## Formulation

PBS with 0.02% sodium azide and 50% glycerol pH 7.3.



## Storage

Store at -20°C. DO NOT ALIQUOT

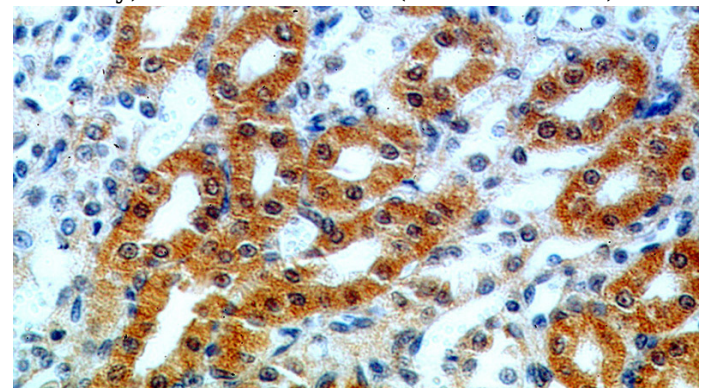
## Clonality

Polyclonal

Immunohistochemical of paraffin-embedded human kidney using Catalog No:111349(C11orf73 antibody) at dilution of 1:50 (under 10x lens)

## Ig Type

Rabbit IgG



## Applications

ELISA, IHC, WB, IP

## Dilutions

Recommended Dilution:

WB: 1:200-1:2000

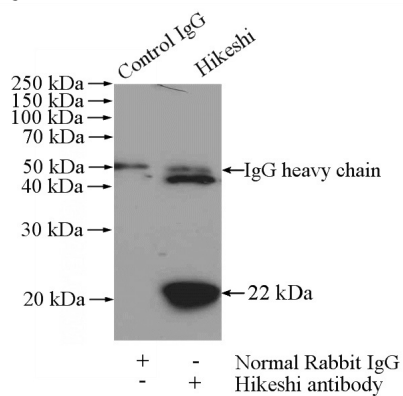
Immunohistochemical of paraffin-embedded human kidney using Catalog No:111349(C11orf73 antibody) at dilution of 1:50 (under 10x lens)

# Hikeshi antibody

Catalog Number: 111349

---

antibody) at dilution of 1:50 (under 40x lens)



IP Result of anti-C11orf73 (IP:Catalog No:111349, 4ug; Detection:Catalog No:111349 1:500) with mouse brain tissue lysate 2640ug.