

HIGD1A antibody

Catalog Number: 111346

Product name

HIGD1A antibody

IHC: 1:20-1:200

IF: 1:10-1:100

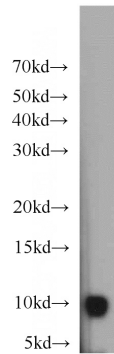
Specificity

Human,Mouse,Rat; other species not tested.

Antibody description

HIGD1A Rabbit Polyclonal antibody. Positive WB detected in HeLa cells, HepG2 cells, rat brain tissue, rat kidney tissue. Positive IF detected in HepG2 cells. Positive IHC detected in human testis tissue. Observed molecular weight by Western-blot: 10kd

Validations



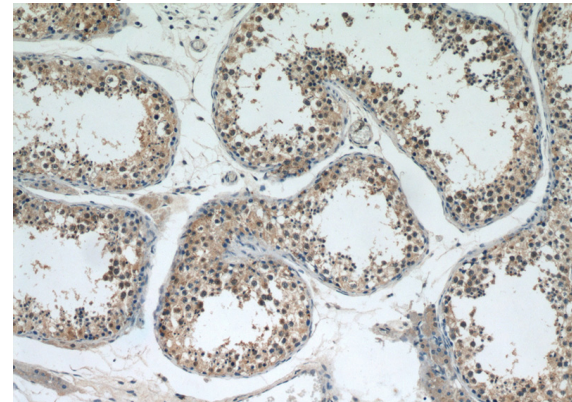
Preparation

This antibody was obtained by immunization of HIGD1A recombinant protein (Accession Number: NM_001099669). Purification method: Antigen affinity purified.

HeLa cells were subjected to SDS PAGE followed by western blot with Catalog No:111346(HIGD1A antibody) at dilution of 1:500

Formulation

PBS with 0.02% sodium azide and 50% glycerol pH 7.3.



Storage

Store at -20°C. DO NOT ALIQUOT

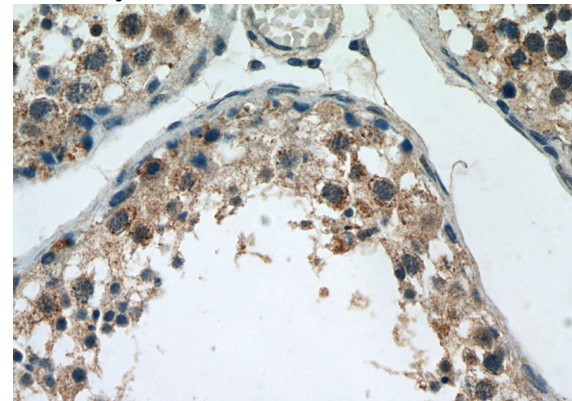
Clonality

Polyclonal

Immunohistochemical of paraffin-embedded human testis using Catalog No:111346(HIGD1A antibody) at dilution of 1:200 (under 10x lens)

Ig Type

Rabbit IgG



Applications

ELISA, WB, IHC, IF

Dilutions

Recommended Dilution:

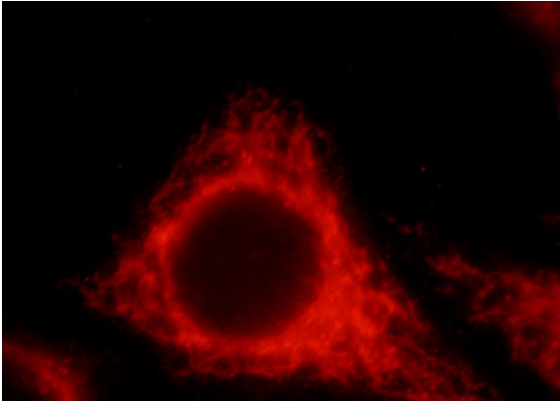
WB: 1:500-1:5000

Immunohistochemical of paraffin-embedded human testis using Catalog No:111346(HIGD1A antibody) at dilution of 1:200 (under 10x lens)

HIGD1A antibody

Catalog Number: 111346

antibody) at dilution of 1:200 (under 40x lens)



Immunofluorescent analysis of HepG2 cells, using HIGD1A antibody Catalog No:111346 at 1:25 dilution and Rhodamine-labeled goat anti-rabbit IgG (red).