

HIBCH antibody

Catalog Number: 111341

Product name

HIBCH antibody

Specificity

human, mouse, rat; other species not tested.

Antibody description

HIBCH Rabbit Polyclonal antibody. Positive IHC detected in human liver cancer. Positive WB detected in human brain tissue, human heart tissue, human liver tissue. Observed molecular weight by Western-blot: 38kd

Preparation

This antibody was obtained by immunization of HIBCH recombinant protein (Accession Number: XM_011510953). Purification method: Antigen affinity purified.

Formulation

PBS with 0.02% sodium azide and 50% glycerol pH 7.3.

Storage

Store at -20°C. DO NOT ALIQUOT

Clonality

Polyclonal

Ig Type

Rabbit IgG

Applications

ELISA, WB, IHC

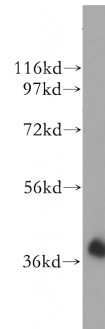
Dilutions

Recommended Dilution:

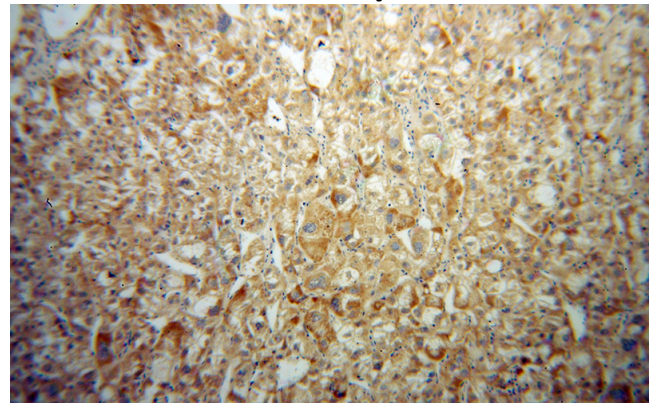
WB: 1:1000-1:10000

IHC: 1:20-1:200

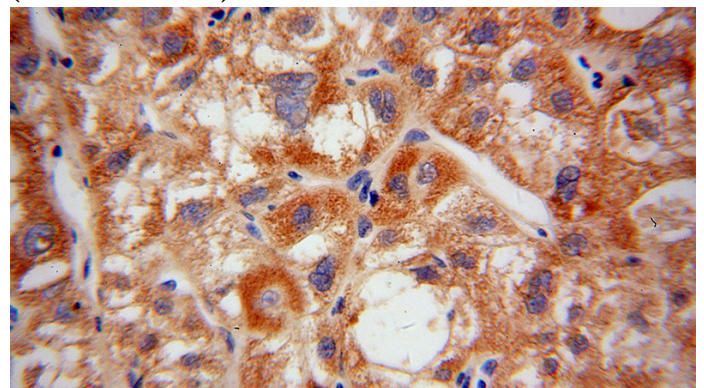
Validations



human brain tissue were subjected to SDS PAGE followed by western blot with Catalog No:111341(HIBCH antibody) at dilution of 1:500



Immunohistochemical of paraffin-embedded human liver cancer using Catalog No:111341(HIBCH antibody) at dilution of 1:100 (under 10x lens)



Immunohistochemical of paraffin-embedded human liver cancer using Catalog No:111341(HIBCH antibody) at dilution of 1:100

HIBCH antibody



Catalog Number: 111341

(under 40x lens)