

hamartin antibody

Catalog Number: 111335

Product name

hamartin antibody

IP: 1:500-1:5000

IHC: 1:20-1:200

Specificity

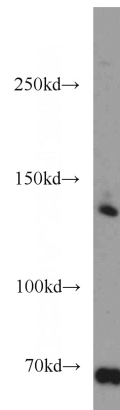
Human, Mouse, Rat; other species not tested.

IF: 1:10-1:100

Antibody description

hamartin Rabbit Polyclonal antibody. Positive IF detected in HeLa cells. Positive IHC detected in human kidney tissue, human skeletal muscle tissue. Positive WB detected in HeLa cells. Positive IP detected in HeLa cells. Observed molecular weight by Western-blot: 70 kDa, 130-140 kDa

Validations



Preparation

This antibody was obtained by immunization of Peptide (Accession Number: NM_000368). Purification method: Antigen affinity purified.

HeLa cells were subjected to SDS PAGE followed by western blot with Catalog No:111335(hamartin antibody) at dilution of 1:1000

Formulation

PBS with 0.02% sodium azide and 50% glycerol pH 7.3.

Storage

Store at -20°C. DO NOT ALIQUOT

Clonality

Polyclonal

Ig Type

Rabbit IgG

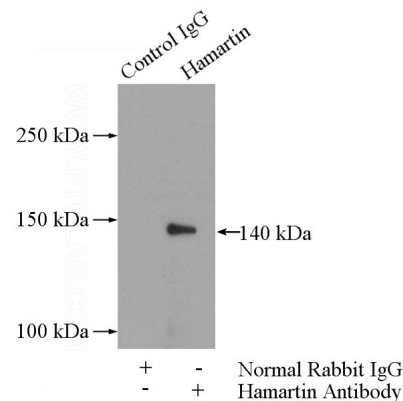
Applications

ELISA, WB, IHC, IF, IP

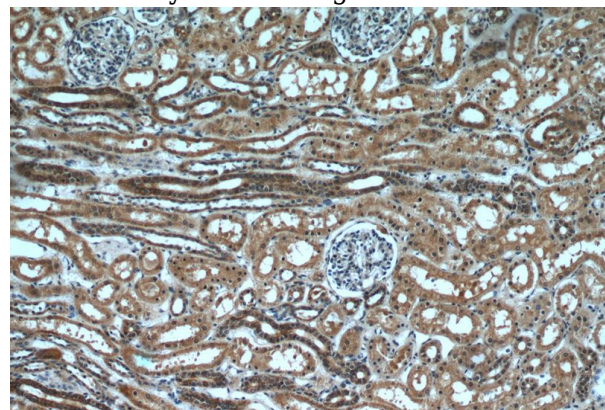
Dilutions

Recommended Dilution:

WB: 1:200-1:2000



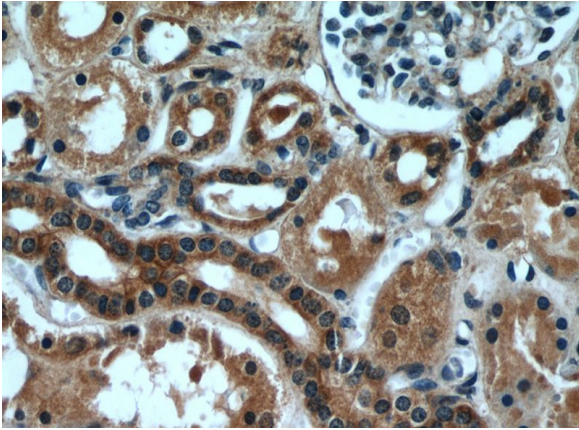
IP Result of anti-hamartin (IP:Catalog No:111335, 4ug; Detection:Catalog No:111335 1:1000) with HeLa cells lysate 2000ug.



hamartin antibody

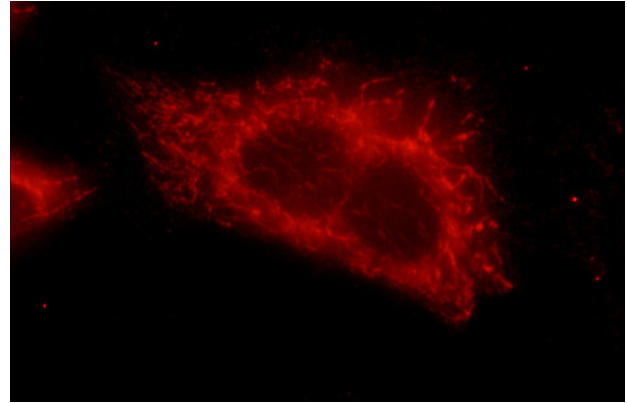
Catalog Number: 111335

Immunohistochemical of paraffin-embedded human kidney using Catalog No:111335(hamartin antibody) at dilution of 1:50 (under 10x lens)



Immunohistochemical of paraffin-embedded

human kidney using Catalog No:111335(hamartin antibody) at dilution of 1:50 (under 40x lens)



Immunofluorescent analysis of HeLa cells using Catalog No:111335(hamartin Antibody) at dilution of 1:25 and Rhodamine-Goat anti-Rabbit IgG