

HADH antibody

Catalog Number: 111332

Product name

HADH antibody

Specificity

Human, Mouse, Rat; other species not tested.

Antibody description

HADH Rabbit Polyclonal antibody. Positive IHC detected in human kidney tissue, human hepat°Cirrhosis tissue. Positive IF detected in HepG2 cells. Positive WB detected in HepG2 cells, Jurkat cells, mouse heart tissue, mouse kidney tissue, mouse liver tissue, mouse pancreas tissue, mouse skeletal muscle tissue. Positive IP detected in HepG2 cells. Observed molecular weight by Western-blot: 34 kDa

Preparation

This antibody was obtained by immunization of HADH recombinant protein (Accession Number: NM_005327). Purification method: Antigen affinity purified.

Formulation

PBS with 0.02% sodium azide and 50% glycerol pH 7.3.

Storage

Store at -20°C. DO NOT ALIQUOT

Clonality

Polyclonal

Ig Type

Rabbit IgG

Applications

ELISA, WB, IHC, IP, IF

Dilutions

Recommended Dilution:

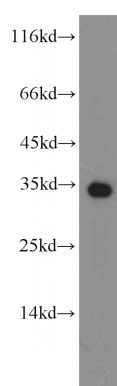
WB: 1:500-1:5000

IP: 1:200-1:2000

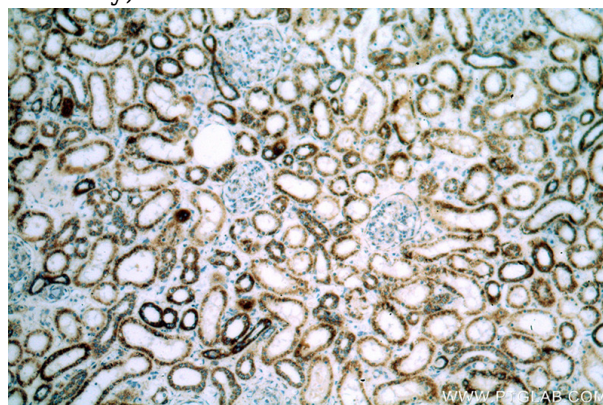
IHC: 1:20-1:200

IF: 1:20-1:200

Validations



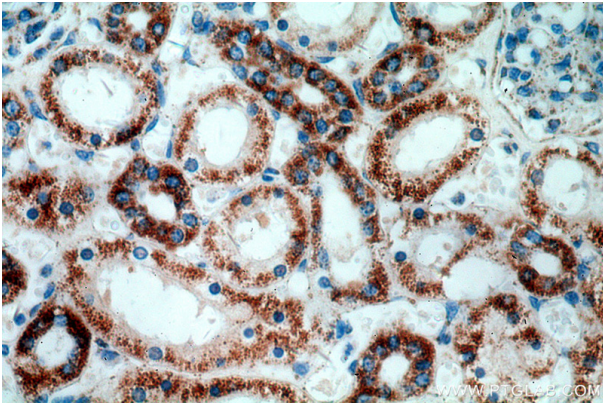
HepG2 cells were subjected to SDS PAGE followed by western blot with Catalog No:111332(HADH antibody) at dilution of 1:500



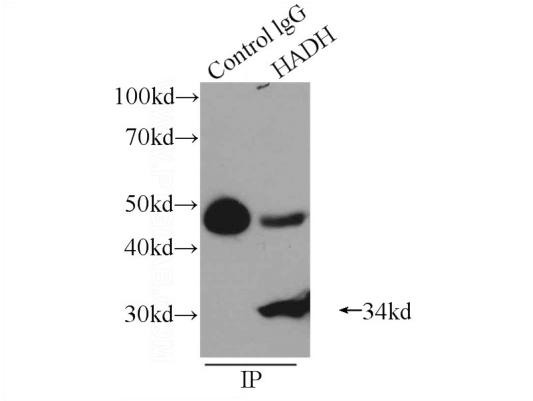
Immunohistochemical of paraffin-embedded human kidney using Catalog No:111332(HADH antibody) at dilution of 1:400 (under 10x lens)

HADH antibody

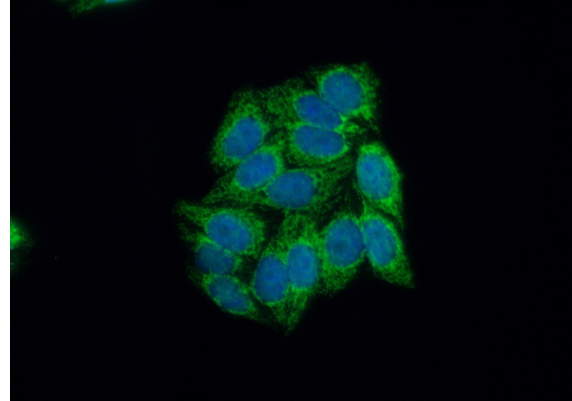
Catalog Number: 111332



Immunohistochemical of paraffin-embedded human kidney using Catalog No:111332(HADH antibody) at dilution of 1:400 (under 40x lens)



IP Result of anti-HADH (IP:Catalog No:111332, 3ug; Detection:Catalog No:111332 1:700) with HepG2 cells lysate 400ug.



Immunofluorescent analysis of (10% Formaldehyde) fixed HepG2 cells using Catalog No:111332(HADH Antibody) at dilution of 1:50 and Alexa Fluor 488-conjugated AffiniPure Goat Anti-Rabbit IgG(H+L)