

GZMB antibody

Catalog Number: 111322

Product name

GZMB antibody

IHC: 1:20-1:200

IF: 1:20-1:200

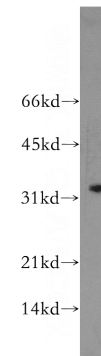
Specificity

Human; other species not tested.

Validations

Antibody description

GZMB Rabbit Polyclonal antibody. Positive WB detected in HL-60 cells. Positive IHC detected in human lymphoma tissue. Positive IF detected in Hela cells. Observed molecular weight by Western-blot: 33kd



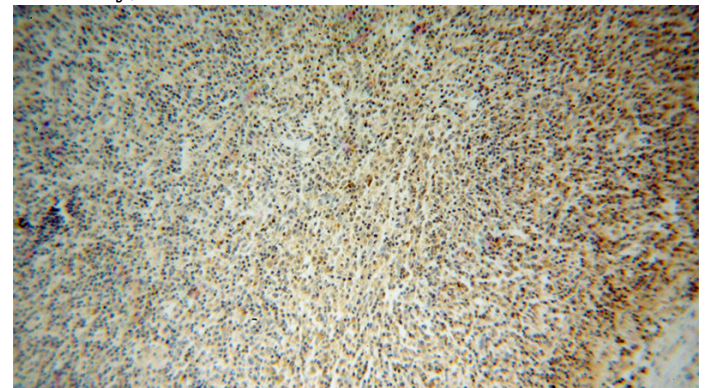
Preparation

This antibody was obtained by immunization of GZMB recombinant protein (Accession Number: NM_004131). Purification method: Antigen affinity purified.

HL-60 cells were subjected to SDS PAGE followed by western blot with Catalog No:111322(GZMB antibody) at dilution of 1:500

Formulation

PBS with 0.02% sodium azide and 50% glycerol pH 7.3.



Storage

Store at -20°C. DO NOT ALIQUOT

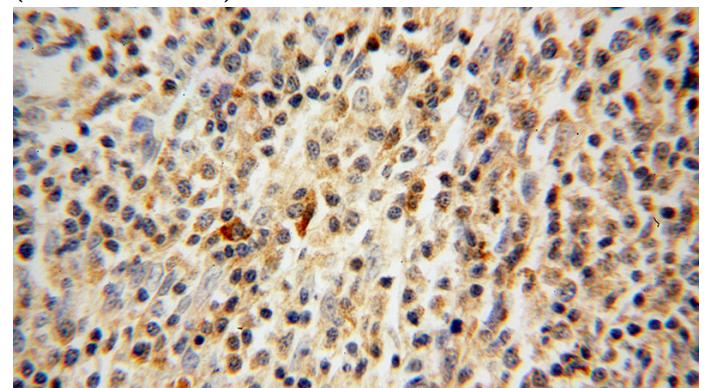
Clonality

Polyclonal

Immunohistochemical of paraffin-embedded human lymphoma using Catalog No:111322(GZMB antibody) at dilution of 1:100 (under 10x lens)

Ig Type

Rabbit IgG



Applications

ELISA, WB, IHC, IF

Dilutions

Recommended Dilution:

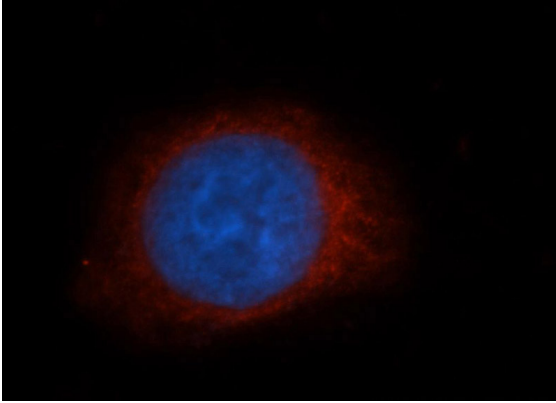
WB: 1:500-1:5000

Immunohistochemical of paraffin-embedded

GZMB antibody

Catalog Number: 111322

human lymphoma using Catalog
No:111322(GZMB antibody) at dilution of 1:100
(under 40x lens)



Immunofluorescent analysis of HeLa cells, using
GZMB antibody Catalog No:111322 at 1:50
dilution and Rhodamine-labeled goat anti-rabbit
IgG (red). Blue pseudocolor = DAPI (fluorescent
DNA dye).