

HEXIM1 antibody

Catalog Number: 111304

Product name

HEXIM1 antibody

Specificity

Human, Mouse, Rat; other species not tested.

Antibody description

HEXIM1 Rabbit Polyclonal antibody. Positive IHC detected in human breast cancer tissue, human cervical cancer tissue, human placenta tissue. Positive IF detected in MCF-7 cells. Positive WB detected in HeLa cells, human brain tissue, MCF7 cells, rat liver tissue. Positive IP detected in MCF-7 cells. Observed molecular weight by Western-blot: 70, 54 kDa

Preparation

This antibody was obtained by immunization of HEXIM1 recombinant protein (Accession Number: NM_006460). Purification method: Antigen affinity purified.

Formulation

PBS with 0.02% sodium azide and 50% glycerol pH 7.3.

Storage

Store at -20°C. DO NOT ALIQUOT

Clonality

Polyclonal

Ig Type

Rabbit IgG

Applications

ELISA, IHC, IF, IP, WB

Dilutions

Recommended Dilution:

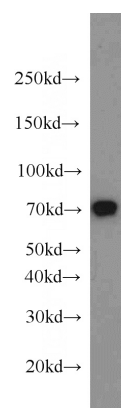
WB: 1:500-1:5000

IP: 1:200-1:2000

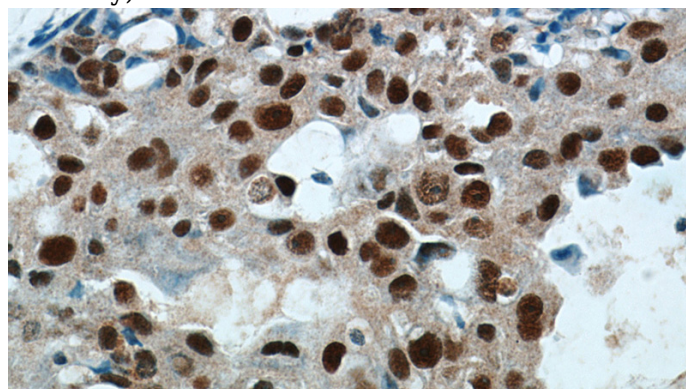
IHC: 1:20-1:200

IF: 1:10-1:100

Validations



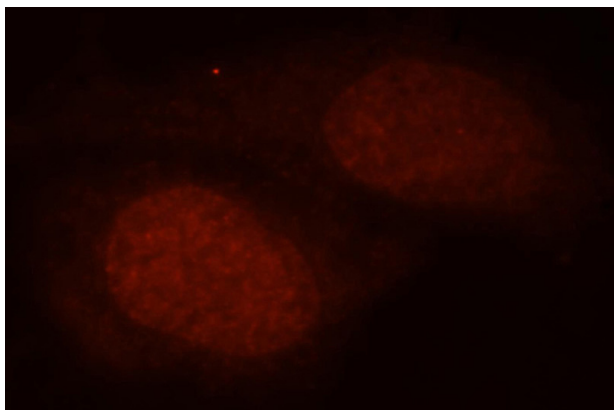
HeLa cells were subjected to SDS PAGE followed by western blot with Catalog No:111304(HEXIM1 antibody) at dilution of 1:1500



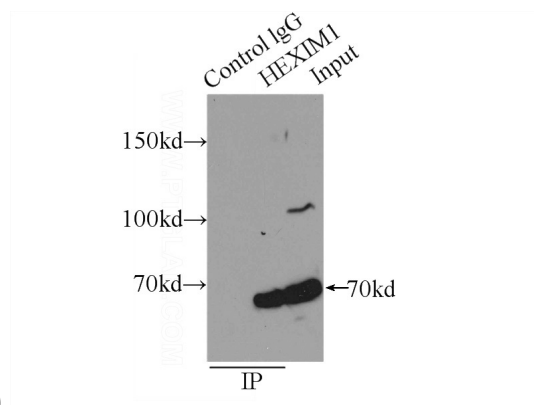
Immunohistochemical of paraffin-embedded human breast cancer using Catalog No:111304(HEXIM1 antibody) at dilution of 1:50 (under 40x lens)

HEXIM1 antibody

Catalog Number: 111304



Immunofluorescent analysis of MCF-7 cells, using HEXIM1 antibody Catalog No:111304 at 1:25 dilution and Rhodamine-labeled goat anti-rabbit



IgG (red).

IP Result of anti-HEXIM1 (IP:Catalog No:111304, 4ug; Detection:Catalog No:111304 1:500) with MCF-7 cells lysate 2000ug.