

HER2/ErbB2 antibody



Catalog Number: 111295

Product name

HER2/ErbB2 antibody

WB: 1:1000-1:10000

IP: 1:200-1:2000

Specificity

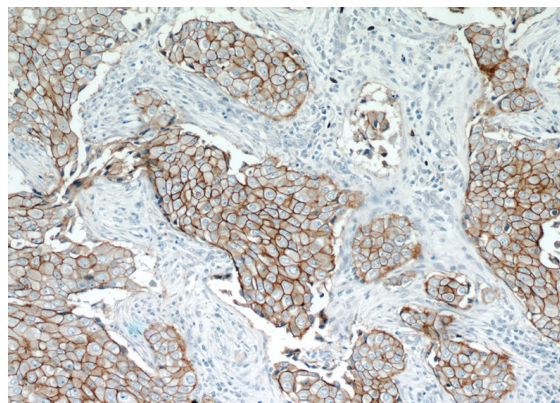
Human; other species not tested.

IHC: 1:20-1:200

Antibody description

HER2/ErbB2 Rabbit Polyclonal antibody. Positive IHC detected in human breast cancer tissue, human kidney tissue, human lung tissue, human spleen tissue, human testis tissue. Positive FC detected in MCF-7 cells. Positive WB detected in HeLa cells, SGC-7901 cells. Positive IP detected in SGC-7901 cells. Observed molecular weight by Western-blot: 185 kDa

Validations



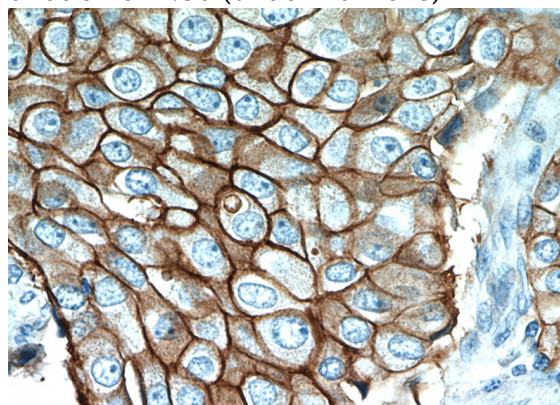
Preparation

This antibody was obtained by immunization of Peptide (Accession Number: NM_004448). Purification method: Antigen affinity purified.

Immunohistochemical of paraffin-embedded human breast cancer using Catalog No:111295(ERBB2,p185-Specific antibody) at dilution of 1:50 (under 10x lens)

Formulation

PBS with 0.02% sodium azide and 50% glycerol pH 7.3.



Storage

Store at -20°C. DO NOT ALIQUOT

Clonality

Polyclonal

Ig Type

Rabbit IgG

Applications

ELISA, WB, IHC, FC, IP

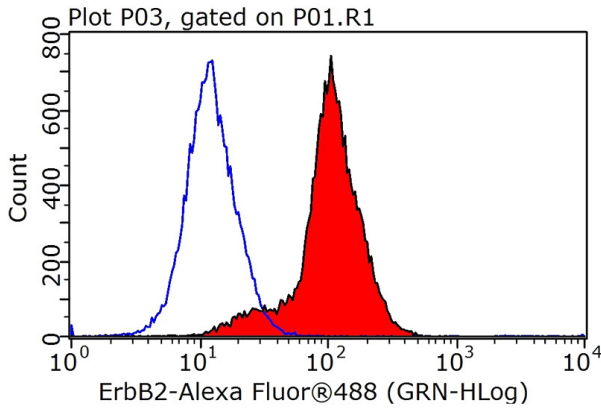
Dilutions

Recommended Dilution:

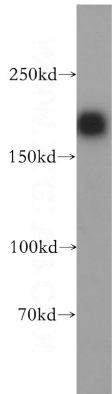
Immunohistochemical of paraffin-embedded human breast cancer using Catalog No:111295(ERBB2,p185-Specific antibody) at dilution of 1:50 (under 40x lens)

HER2/ErbB2 antibody

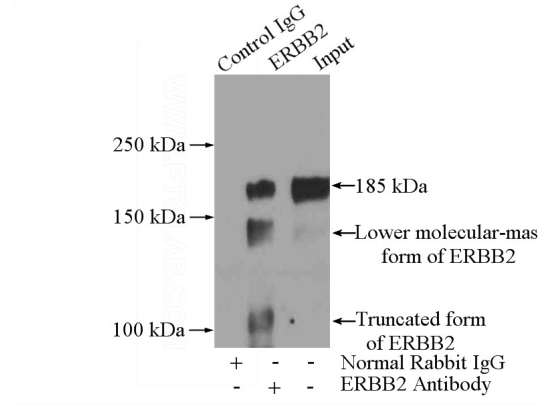
Catalog Number: 111295



1X10⁶ MCF-7 cells were stained with 0.2ug ERBB2,p185-Specific antibody (Catalog No:111295, red) and control antibody (blue). Fixed with 90% MeOH blocked with 3% BSA (30 min). Alexa Fluor 488-conjugated AffiniPure Goat Anti-Rabbit IgG(H+L) with dilution 1:1000.



HeLa cells were subjected to SDS PAGE followed by western blot with Catalog No:111295(ERBB2,p185-Specific antibody) at dilution of 1:2000



IP Result of anti-ERBB2,p185-Specific (IP:Catalog No:111295, 5ug; Detection:Catalog No:111295 1:500) with SGC-7901 cells lysate 2400ug.