

# HAT1 antibody



Catalog Number: 111260

## Product name

HAT1 antibody

IP: 1:200-1:2000

IHC: 1:20-1:200

## Specificity

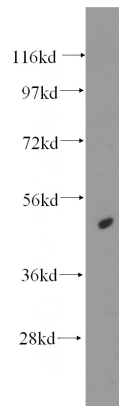
Human, Mouse, Rat; other species not tested.

IF: 1:10-1:100

## Antibody description

HAT1 Rabbit Polyclonal antibody. Positive IF detected in HepG2 cells. Positive IHC detected in human lymphoma tissue. Positive WB detected in MCF7 cells, human liver tissue. Positive IP detected in HepG2 cells. Observed molecular weight by Western-blot: 46kd

## Validations



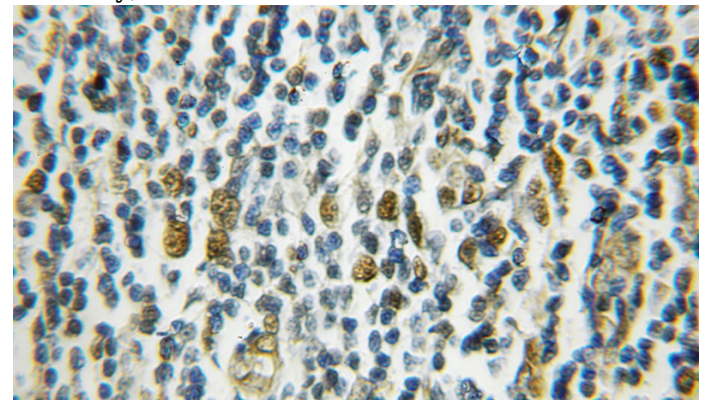
## Preparation

This antibody was obtained by immunization of HAT1 recombinant protein (Accession Number: BC018682). Purification method: Antigen affinity purified.

MCF7 cells were subjected to SDS PAGE followed by western blot with Catalog No:111260(HAT1 antibody) at dilution of 1:500

## Formulation

PBS with 0.1% sodium azide and 50% glycerol pH 7.3.



## Storage

Store at -20°C. DO NOT ALIQUOT

## Clonality

Polyclonal

## Ig Type

Rabbit IgG

## Applications

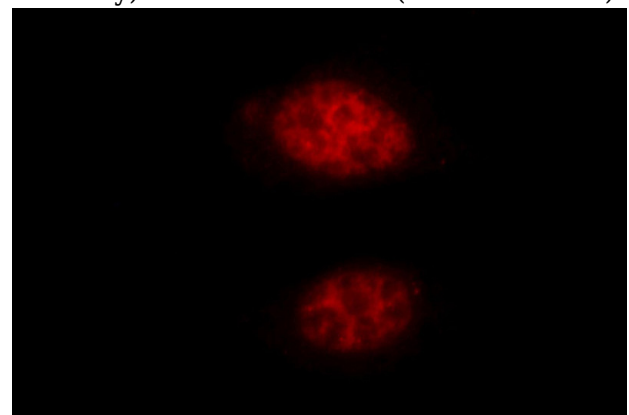
ELISA, WB, IHC, IF, IP

## Dilutions

Recommended Dilution:

WB: 1:200-1:2000

Immunohistochemical of paraffin-embedded human lymphoma using Catalog No:111260(HAT1 antibody) at dilution of 1:50 (under 10x lens)



# HAT1 antibody

Catalog Number: 111260

---

Immunofluorescent analysis of HepG2 cells, using HAT1 antibody Catalog No:111260 at 1:25 dilution and Rhodamine-labeled goat anti-rabbit IgG (red).

IP Result of anti-HAT1 (IP:Catalog No:111260, 4ug; Detection:Catalog No:111260 1:500) with HepG2 cells lysate 3200ug.

