

GTF2H3 antibody



Catalog Number: 111235

Product name

GTF2H3 antibody

Immunogen

[Human GTF2H3 Recombinant protein \(His tag\)](#)

Specificity

Human; other species not tested.

Antibody description

GTF2H3 Rabbit Polyclonal antibody. Positive WB detected in HepG2 cells, K-562 cells. Observed molecular weight by Western-blot: 32 kDa

Preparation

This antibody was obtained by immunization of GTF2H3 recombinant protein (Accession Number: NM_001516). Purification method: Antigen affinity purified.

Formulation

PBS with 0.02% sodium azide and 50% glycerol pH 7.3.

Storage

Store at -20°C. DO NOT ALIQUOT

Clonality

Polyclonal

Ig Type

Rabbit IgG

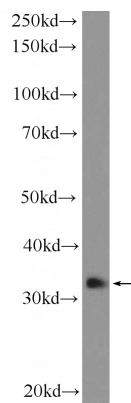
Applications

ELISA, WB

Dilutions

Recommended Dilution:
WB: 1:200-1:2000

Validations



HepG2 cells were subjected to SDS PAGE followed by western blot with Catalog No:111235(GTF2H3 Antibody) at dilution of 1:600