

GTF2F2 antibody



Catalog Number: 111231

Product name

GTF2F2 antibody

Specificity

Human, Mouse, Rat; other species not tested.

Antibody description

GTF2F2 Rabbit Polyclonal antibody. Positive WB detected in K-562 cells, HeLa cells, mouse spleen tissue, PC-3 cells, rat spleen tissue. Observed molecular weight by Western-blot: 30kd

Preparation

This antibody was obtained by immunization of GTF2F2 recombinant protein (Accession Number: NM_004128). Purification method: Antigen affinity purified.

Formulation

PBS with 0.02% sodium azide and 50% glycerol pH 7.3.

Storage

Store at -20°C. DO NOT ALIQUOT

Clonality

Polyclonal

Ig Type

Rabbit IgG

Applications

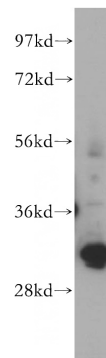
ELISA, WB

Dilutions

Recommended Dilution:

WB: 1:500-1:5000

Validations



K-562 cells were subjected to SDS PAGE followed by western blot with Catalog No:111231(GTF2F2 antibody) at dilution of 1:500