

GTF2A2 antibody



Catalog Number: 111228

Product name

GTF2A2 antibody

Specificity

Human, Mouse, Rat; other species not tested.

Antibody description

GTF2A2 Rabbit Polyclonal antibody. Positive WB detected in mouse testis tissue, HeLa cells. Positive IHC detected in human prostate cancer tissue. Observed molecular weight by Western-blot: 12kd

Preparation

This antibody was obtained by immunization of GTF2A2 recombinant protein (Accession Number: NM_001320929). Purification method: Antigen affinity purified.

Formulation

PBS with 0.1% sodium azide and 50% glycerol pH 7.3.

Storage

Store at -20°C. DO NOT ALIQUOT

Clonality

Polyclonal

Ig Type

Rabbit IgG

Applications

ELISA, WB, IHC

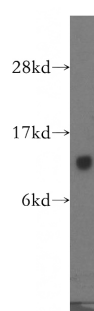
Dilutions

Recommended Dilution:

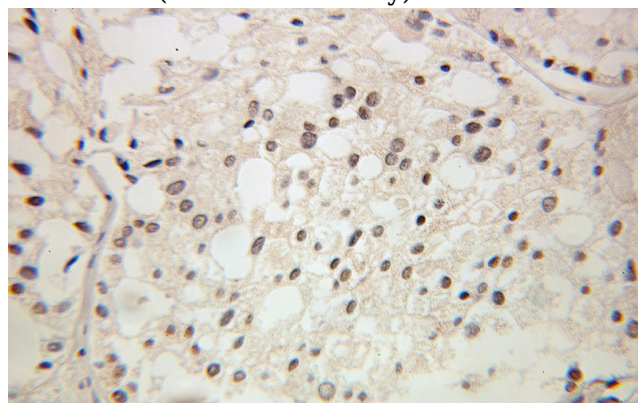
WB: 1:200-1:1000

IHC: 1:20-1:200

Validations



mouse testis tissue were subjected to SDS PAGE followed by western blot with Catalog No:111228(GTF2A2 antibody) at dilution of 1:300



Immunohistochemical of paraffin-embedded human prostate cancer using Catalog No:111228(GTF2A2 antibody) at dilution of 1:100 (under 25x lens)