

GTF2A1 antibody



Catalog Number: 111227

Product name

GTF2A1 antibody

Specificity

Human, Mouse, Rat; other species not tested.

Antibody description

GTF2A1 Rabbit Polyclonal antibody. Positive WB detected in rat testis tissue, BGC-823 cells, SKOV-3 cells. Positive IHC detected in human testis tissue. Observed molecular weight by Western-blot: 45-50 kDa

Preparation

This antibody was obtained by immunization of GTF2A1 recombinant protein (Accession Number: NM_015859). Purification method: Antigen affinity purified.

Formulation

PBS with 0.1% sodium azide and 50% glycerol pH 7.3.

Storage

Store at -20°C. DO NOT ALIQUOT

Clonality

Polyclonal

Ig Type

Rabbit IgG

Applications

ELISA, WB, IHC

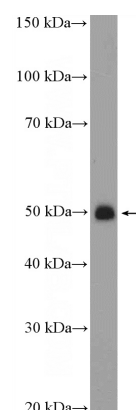
Dilutions

Recommended Dilution:

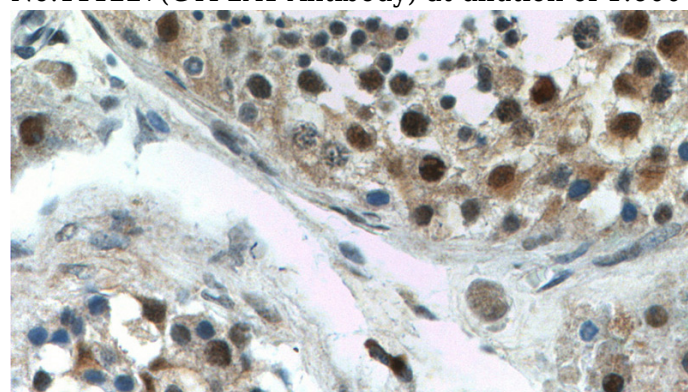
WB: 1:200-1:2000

IHC: 1:20-1:200

Validations



rat testis tissue were subjected to SDS PAGE followed by western blot with Catalog No:111227(GTF2A1 Antibody) at dilution of 1:600



Immunohistochemistry of paraffin-embedded human testis tissue slide using Catalog No:111227(GTF2A1 Antibody) at dilution of 1:200 (under 40x lens).