

# GRPEL1 antibody

Catalog Number: 111224

## Product name

GRPEL1 antibody

## Immunogen

[Human GRPEL1 Recombinant protein \(GST tag\)](#)

## Specificity

Human, Mouse, Rat; other species not tested.

## Antibody description

GRPEL1 Rabbit Polyclonal antibody. Positive WB detected in MCF7 cells. Positive IP detected in MCF-7 cells. Positive IF detected in HepG2 cells. Positive IHC detected in human colon cancer tissue. Observed molecular weight by Western-blot: 24 kDa

## Preparation

This antibody was obtained by immunization of GRPEL1 recombinant protein (Accession Number: NM\_025196). Purification method: Antigen affinity purified.

## Formulation

PBS with 0.1% sodium azide and 50% glycerol pH 7.3.

## Storage

Store at -20°C. DO NOT ALIQUOT

## Clonality

Polyclonal

## Ig Type

Rabbit IgG

## Applications

ELISA, WB, IHC, IF, IP

## Dilutions

Recommended Dilution:

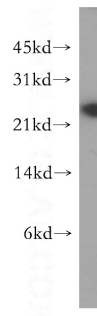
WB: 1:200-1:2000

IP: 1:200-1:2000

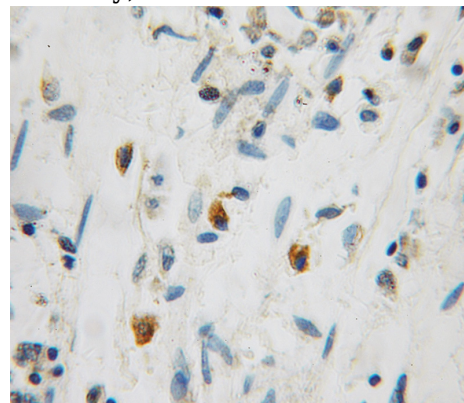
IHC: 1:20-1:200

IF: 1:10-1:100

## Validations



MCF7 cells were subjected to SDS PAGE followed by western blot with Catalog No:111224(GRPEL1 antibody) at dilution of 1:500

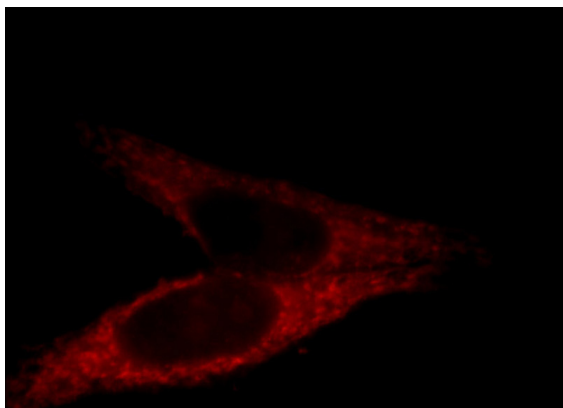


Immunohistochemical of paraffin-embedded human colon cancer using Catalog No:111224(GRPEL1 antibody) at dilution of 1:100 (under 10x lens)

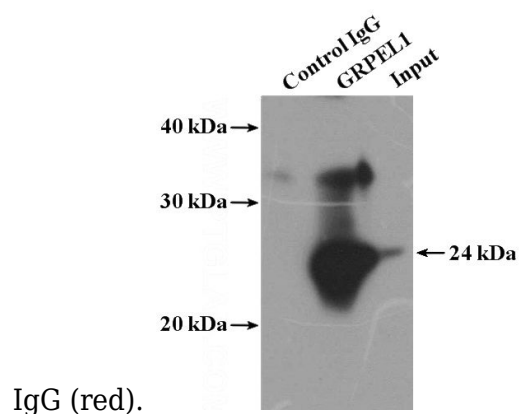
# GRPEL1 antibody

Catalog Number: 111224

---



Immunofluorescent analysis of HepG2 cells, using GRPEL1 antibody Catalog No:111224 at 1:25 dilution and Rhodamine-labeled goat anti-rabbit



IP Result of anti-GRPEL1 (IP:Catalog No:111224, 4ug; Detection:Catalog No:111224 1:600) with MCF-7 cells lysate 1280ug.