

Growth hormone antibody



Catalog Number: 111219

Product name

Growth hormone antibody

Specificity

Human; other species not tested.

Antibody description

Growth hormone Rabbit Polyclonal antibody.
Positive WB detected in human placenta tissue.
Positive IHC detected in human pituitary adenoma tissue. Observed molecular weight by Western-blot: 23 kDa

Preparation

This antibody was obtained by immunization of Peptide (Accession Number: NM_000515).
Purification method: Antigen affinity purified.

Formulation

PBS with 0.02% sodium azide and 50% glycerol
pH 7.3.

Storage

Store at -20°C. DO NOT ALIQUOT

Clonality

Polyclonal

Ig Type

Rabbit IgG

Applications

ELISA, WB, IHC

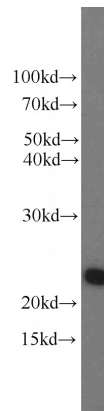
Dilutions

Recommended Dilution:

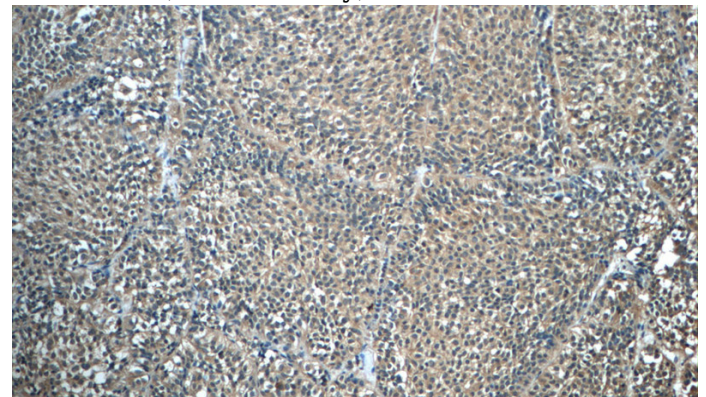
WB: 1:500-1:5000

IHC: 1:20-1:200

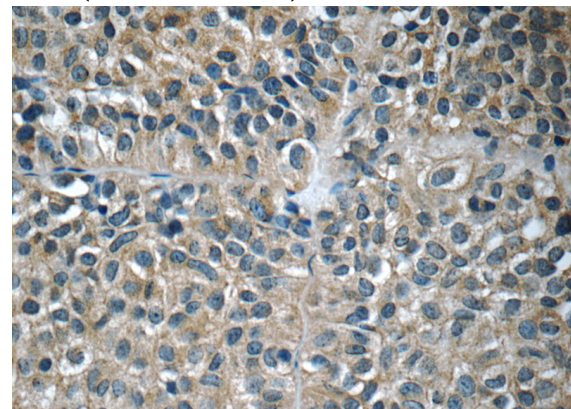
Validations



human placenta tissue were subjected to SDS PAGE followed by western blot with Catalog No:111219(GH1 antibody) at dilution of 1:800



Immunohistochemistry of paraffin-embedded human pituitary adenoma tissue slide using Catalog No:111219(GH1 Antibody) at dilution of 1:50 (under 10x lens)



Immunohistochemistry of paraffin-embedded human pituitary adenoma tissue slide using Catalog No:111219(GH1 Antibody) at dilution of 1:50 (under 40x lens)