

GRIP1 antibody



Catalog Number: 111209

Product name

GRIP1 antibody

IP: 1:500-1:5000

IHC: 1:20-1:200

Specificity

Human, Mouse; other species not tested.

IF: 1:20-1:200

Antibody description

GRIP1 Rabbit Polyclonal antibody. Positive IF detected in HepG2 cells. Positive IHC detected in human kidney tissue. Positive IP detected in mouse brain tissue. Positive WB detected in mouse brain tissue, mouse testis tissue. Observed molecular weight by Western-blot: 130-135 kDa

Preparation

This antibody was obtained by immunization of GRIP1 recombinant protein (Accession Number: NM_021150). Purification method: Antigen affinity purified.

Formulation

PBS with 0.02% sodium azide and 50% glycerol pH 7.3.

Storage

Store at -20°C. DO NOT ALIQUOT

Clonality

Polyclonal

Ig Type

Rabbit IgG

Applications

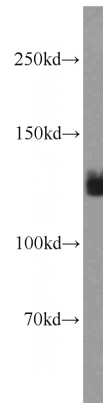
ELISA, WB, IF, IHC, IP

Dilutions

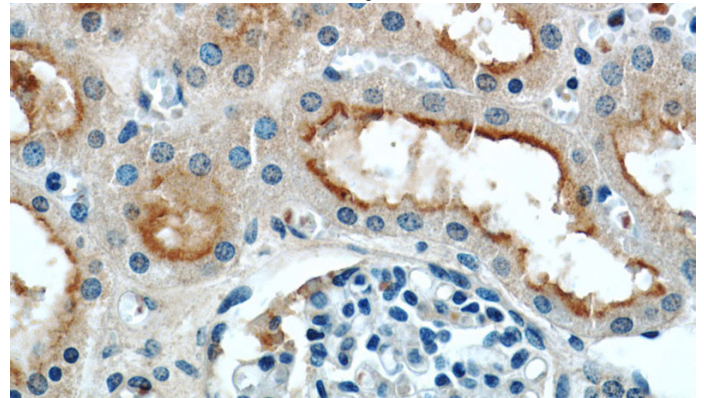
Recommended Dilution:

WB: 1:500-1:5000

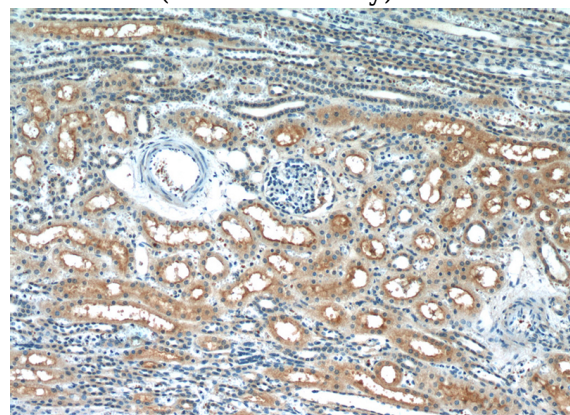
Validations



mouse brain tissue were subjected to SDS PAGE followed by western blot with Catalog No:111209(GRIP1 antibody) at dilution of 1:1000



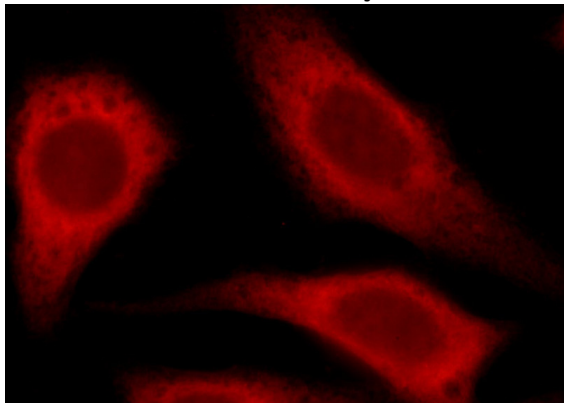
Immunohistochemistry of paraffin-embedded human kidney slide using Catalog No:111209(GRIP1 Antibody) at dilution of 1:50



GRIP1 antibody

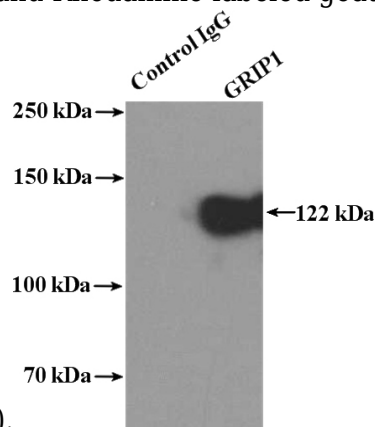
Catalog Number: 111209

Immunohistochemistry of paraffin-embedded human kidney slide using Catalog No:111209(GRIP1 Antibody) at dilution of 1:50



Immunofluorescent analysis of HepG2 cells, using GRIP1 antibody Catalog No:111209 at 1:50

dilution and Rhodamine-labeled goat anti-rabbit



IgG (red).

IP Result of anti-GRIP1 (IP:Catalog No:111209, 4ug; Detection:Catalog No:111209 1:1000) with mouse brain tissue lysate 5200ug.