

# GRB10 antibody



Catalog Number: 111198

## Product name

GRB10 antibody

## Immunogen

[Human GRB10 Recombinant protein \(His tag\)](#)

## Specificity

Human, Mouse, Rat; other species not tested.

## Antibody description

GRB10 Rabbit Polyclonal antibody. Positive IF detected in HepG2 cells. Positive WB detected in HepG2 cells. Observed molecular weight by Western-blot: 65 kDa

## Preparation

This antibody was obtained by immunization of GRB10 recombinant protein (Accession Number: XM\_017012064). Purification method: Antigen affinity purified.

## Formulation

PBS with 0.02% sodium azide and 50% glycerol pH 7.3.

## Storage

Store at -20°C. DO NOT ALIQUOT

## Clonality

Polyclonal

## Ig Type

Rabbit IgG

## Applications

ELISA, WB, IF

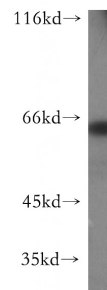
## Dilutions

Recommended Dilution:

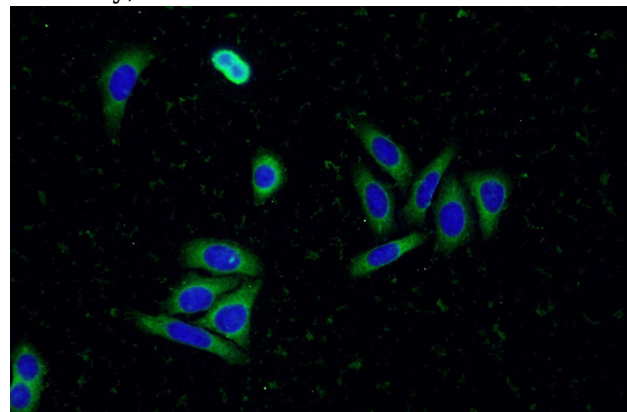
WB: 1:200-1:1000

IF: 1:20-1:200

## Validations



HepG2 cells were subjected to SDS PAGE followed by western blot with Catalog No:111198(GRB10 antibody) at dilution of 1:500



Immunofluorescent analysis of (-20oc Ethanol) fixed HepG2 cells using Catalog No:111198(GRB10 Antibody) at dilution of 1:50 and Alexa Fluor 488-conjugated AffiniPure Goat Anti-Rabbit IgG(H+L)