

# GRB10 antibody



Catalog Number: 111197

## Product name

GRB10 antibody

WB: 1:500-1:5000

IHC: 1:20-1:200

## Specificity

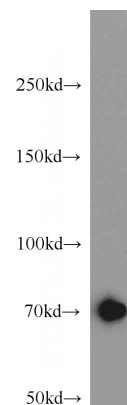
Human, Mouse, Rat; other species not tested.

IF: 1:20-1:200

## Antibody description

GRB10 Rabbit Polyclonal antibody. Positive IHC detected in human liver tissue, human kidney tissue. Positive IF detected in HepG2 cells. Positive WB detected in mouse liver tissue, HeLa cells, HepG2 cells, mouse brain tissue, rat brain tissue. Observed molecular weight by Western-blot: 60-70 kDa

## Validations



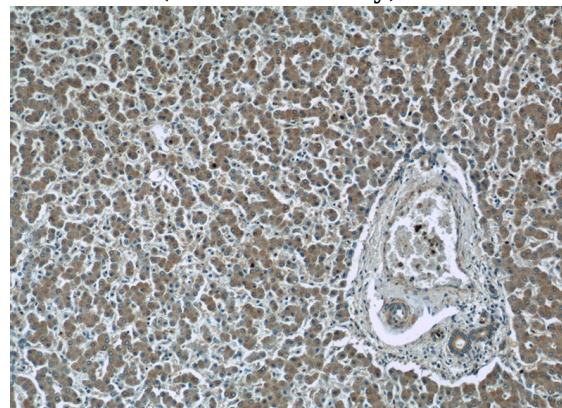
## Preparation

This antibody was obtained by immunization of GRB10 recombinant protein (Accession Number: XM\_017012064). Purification method: Antigen affinity purified.

mouse liver tissue were subjected to SDS PAGE followed by western blot with Catalog No:111197(GRB10 antibody) at dilution of 1:1000

## Formulation

PBS with 0.02% sodium azide and 50% glycerol pH 7.3.



## Storage

Store at -20°C. DO NOT ALIQUOT

## Clonality

Polyclonal

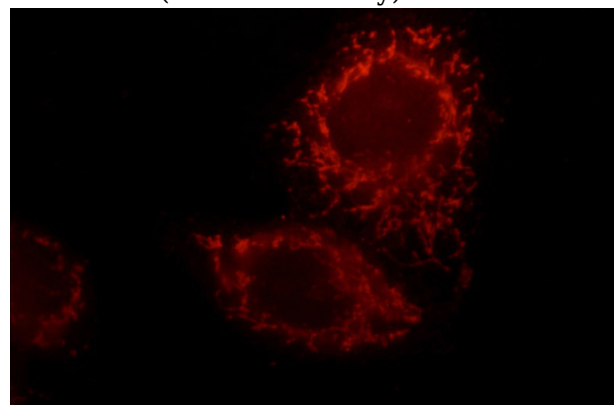
Immunohistochemistry of paraffin-embedded human liver slide using Catalog No:111197(GRB10 Antibody) at dilution of 1:50

## Ig Type

Rabbit IgG

## Applications

ELISA, WB, IF, IHC



## Dilutions

Recommended Dilution:

# GRB10 antibody



Catalog Number: 111197

---

Immunofluorescent analysis of HepG2 cells, using GRB10 antibody Catalog No:111197 at 1:50

dilution and Rhodamine-labeled goat anti-rabbit IgG (red).